

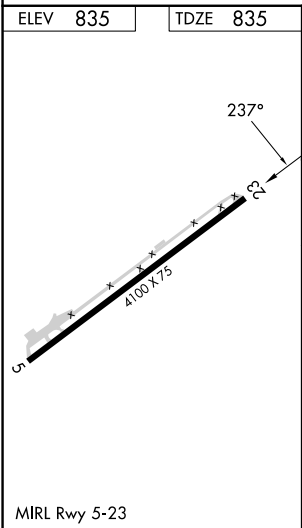
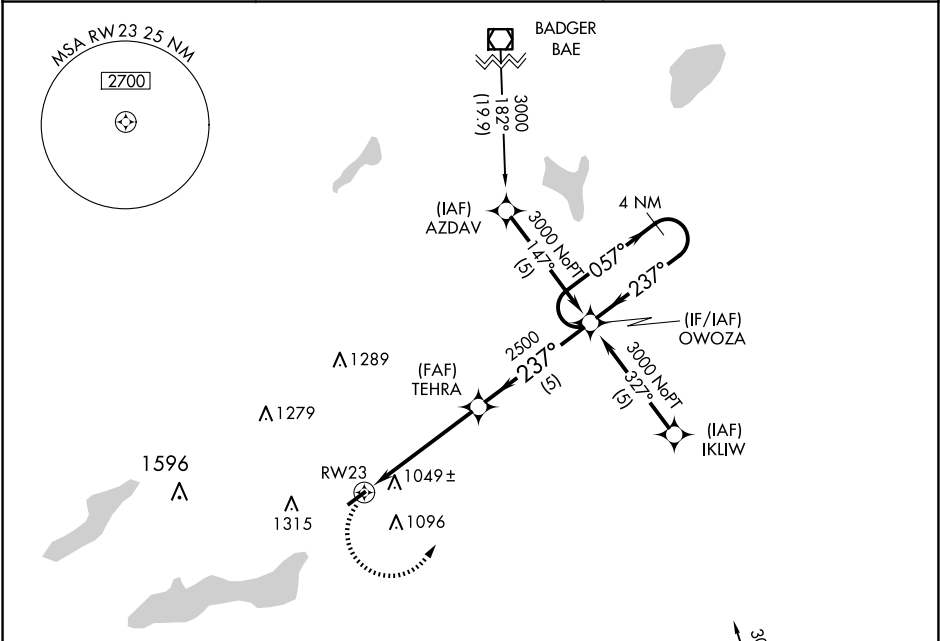
APP CRS 237°	Rwy Idg	4100
	TDZE	835
	Apt Elev	835

RNAV (GPS) RWY 23

GRAND GENEVA RESORT (C02)

<div><div><div>▼</div><div>▲</div></div><div>NA</div></div> <div>DME/DME RNP-0.3 NA. Procedure NA at night. Rwy 23 helicopter visibility reduction below 1 SM NA. Use Kenosha altimeter setting.</div>	MISSED APPROACH: Climbing left turn to 3000 direct OWOZA and hold.
--	--

ENW ASOS 127.175	MILWAUKEE APP CON 135.875	UNICOM 122.8 (CTAF)
----------------------------	-------------------------------------	-------------------------------



<div>3000</div> <div>OWOZA</div> <div>Visual Segment - Obstacles.</div>		<div>4 NM</div> <div>Holding Pattern</div>		
<div>TEHRA</div> <div>2500</div>		<div>OWOZA</div> <div>057°</div> <div>3000</div> <div>←237°</div>		
<div>RW23</div> <div>5.1 NM</div>		<div>5 NM</div>		
CATEGORY	A	B	C	D
LNAV MDA	1360-1	525 (600-1)	1360-1½ 525 (600-1½)	NA
CIRCLING	1500-1 665 (700-1)	1520-1 685 (700-1)	1740-2¾ 905 (1000-2¾)	NA