

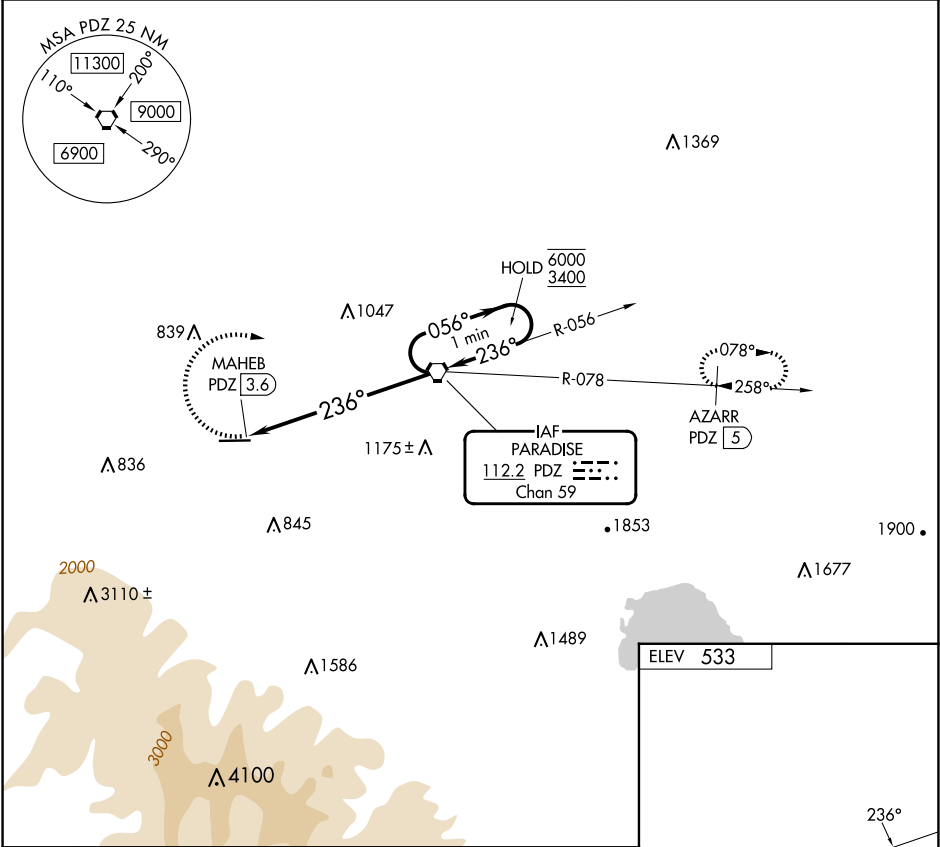
VORTAC PDZ	APP CRS	Rwy Idg	N/A
<b>112.2</b>	<b>236°</b>	TDZE	N/A
Chan <b>59</b>		Apt Elev	<b>533</b>

VOR-A

CORONA MUNI (AJO)

<div><div></div><div></div></div> <div>When local altimeter setting not received, use ONT altimeter setting and increase all MDAs 80 feet. Procedure NA at night.</div>	MISSED APPROACH: Climbing right turn to 4700 direct PDZ VORTAC then on PDZ VORTAC R-078 to AZARR/5 DME and hold, continue climb-in-hold to 4700.
---	--

AWOS-3PT <b>132.175</b>	SOCAL APP CON <b>135.4 377.125</b>	UNICOM <b>122.7 (CTAF) 0</b>
----------------------------	---------------------------------------	---------------------------------



4700	PDZ	PDZ R-078	AZARR PDZ 5	PDZ VORTAC	One Minute Holding Pattern	0.6% UP → 3200 X 60
MAHEB PDZ 3.6	236°	3100	056°	236°	6000	3400
3.6 NM						
CATEGORY	A	B	C	D	FAF to MAP 3.6 NM	
CIRCLING	1660-1¼ 1127 (1200-1¼)	1660-1½ 1127 (1200-1½)	NA		Knots	60 90 120 150 180
					Min:Sec	3:36 2:24 1:48 1:26 1:12