

TACAN RWY 3

VORTAC OCN 115.3 Chan 100	APCH CRS 026°	Rwy Idg TDZE Arpt Elev 6005 67 78
---------------------------------	------------------	--

[USN] CAMP PENDLETON MCAS (MUNN FLD) (KNFG)

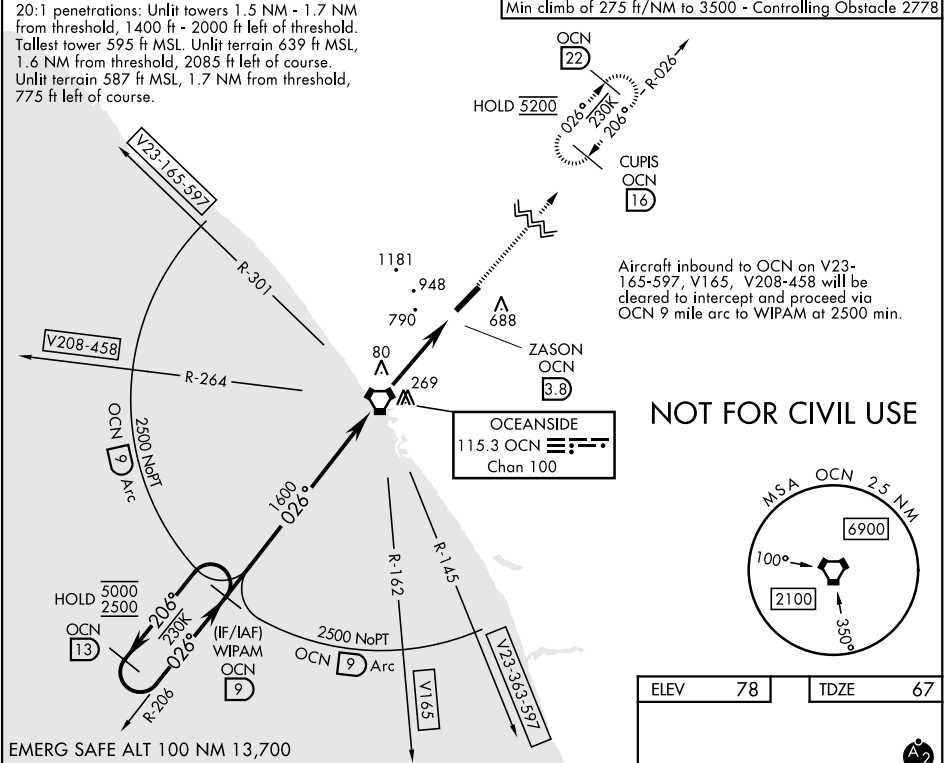
Procedure not authorized at night when VGSI inop. Visibility reduction by helicopters not authorized.	MISSED APPROACH: Climb to 5200 and intercept the OCN VORTAC R-026 direct CUPIS and hold. Climb in hold.
--	--

ATIS ★ 285.45	SOCAL APP CON 127.3 323.0	TOWER ★ 128.775 340.2	GND CON 134.675 360.2	CLNC DEL 134.675 271.6	ASR/PAR
------------------	------------------------------	--------------------------	--------------------------	---------------------------	---------

CAUTION: High terrain on final approach.

Knots	60	120	180	240	300	360
V/V(fpm)	275	550	825	1100	1375	1650
Min climb of 275 ft/NM to 3500 - Controlling Obstacle 2778						

20:1 penetrations: Unlit towers 1.5 NM - 1.7 NM



EMERG SAFE ALT 100 NM 13,700		VGSI and descent angle not coincident (VGSI Angle 4.00/TCH 68).		5200 OCN R-026	CUPIS OCN 16
CATEGORY	A	B	C	D	
S-3	1060-1¼ 993 (1000-1¼)	1060-1½ 993 (1000-1½)	1060-3	993 (1000-3)	
CIRCLING	1060-1¼ 993 (1000-1¼)	1260-1½ 1182 (1200-1½)	1500-3	1422 (1500-3)	HIRL Rwy 3-21

TACAN RWY 3

SW-3, 07 AUG 2025 to 04 SEP 2025

SW-3, 07 AUG 2025 to 04 SEP 2025