

## RNAV (GPS) RWY 21

WAAS CH <b>91083</b> W21A	APCH CRS 211°	Rwy Idg <b>6005</b> TDZE <b>78</b> Arpt Elev <b>78</b>
---------------------------------	------------------	--

- (USN)

CAMP PENDLETON MCAS (MUNN FLD) (KNFG)

RNP APCH-GPS

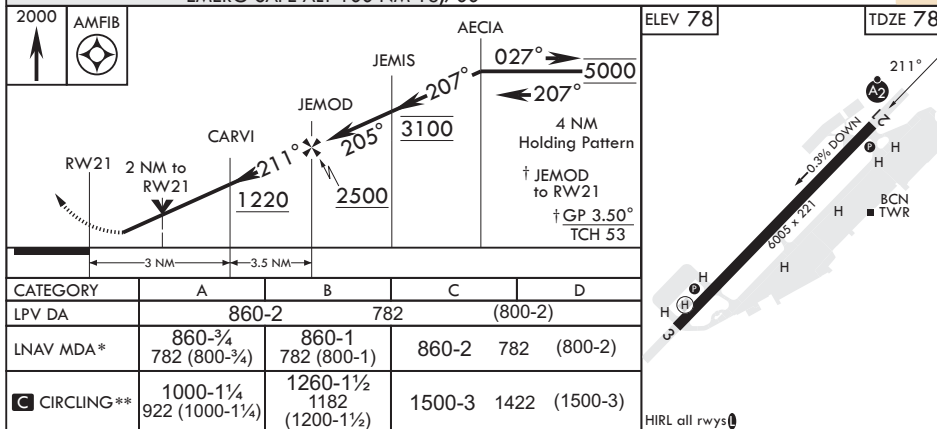
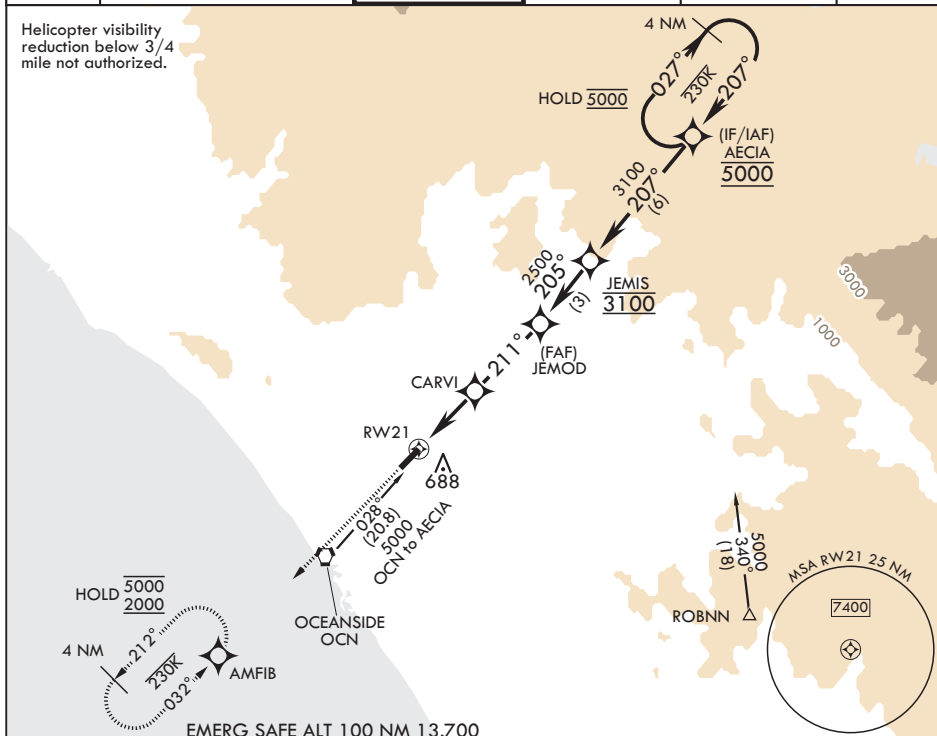
**T** \* When ALS inop, increase CAT A vis to 1 mile, CAT B vis to 1 1/4 miles, CAT CD vis to 2 1/2 miles.  
\*\* Circling Rwy 3 not authorized at night.



**MISSED APPROACH:** Climb to 2000 direct AMFIB and hold.

ATIS★ 285.45	SOCAL APP CON/DEP CON 127.3 323.0	TOWER★ 128.775 0 340.2	GND CON 134.675 360.2	CLNC DEL 134.675 271.6	ASR/PAR
-----------------	--------------------------------------	---------------------------	--------------------------	---------------------------	---------

Helicopter visibility  
reduction below 3/4  
mile not authorized.



OCEANSIDE, CALIFORNIA

33°18'N - 117°21'W CAMP PENDLETON MCAS (MUNN FLD) (KNFG)

Amdt 6 12JUN25

## RNAV (GPS) RWY 21

SW-3, 07 AUG 2025 to 04 SEP 2025

SW-3, 07 AUG 2025 to 04 SEP 2025