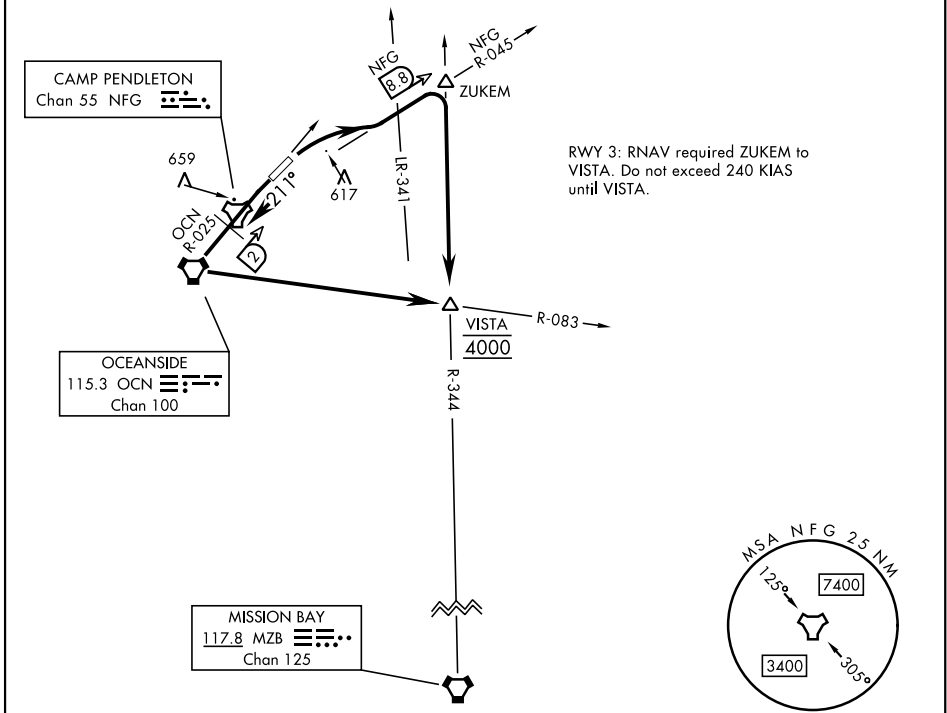


ATIS ★285.45	[USN]	Rwy	Knots	60	120	180	240	300	360
CLNC DEL		3	Ⓢ V/V(fpm)	486	972	1458	1944	2430	2916
134.675 271.6		21	Ⓢ V/V(fpm)	442	884	1326	1768	2210	2652
GND CON									

134.675 360.2  
TOWER ★  
128.775 340.2  
SOCAL DEP CON  
127.3 323.0

Minimum Climb Rate  
Ⓢ to 800  
Ⓢ to 1300

NOT FOR CIVIL USE



DEPARTURE ROUTE DESCRIPTION

TAKEOFF RWY 3: Climbing right turn to intercept NFG TACAN R-045 to ZUKEM then right turn direct VISTA. Cross VISTA at 4000 or assigned altitude.

TAKEOFF RWY 21: Climb on heading 211° to intercept OCN VORTAC R-025 then direct OCN then left turn to intercept OCN R-083 direct VISTA. Cross VISTA at 4000 or assigned altitude.