

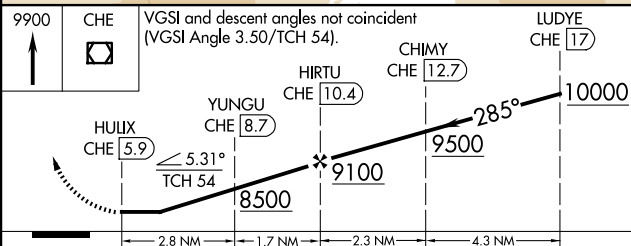
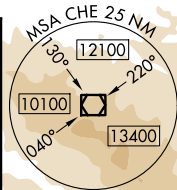
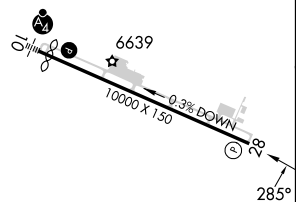
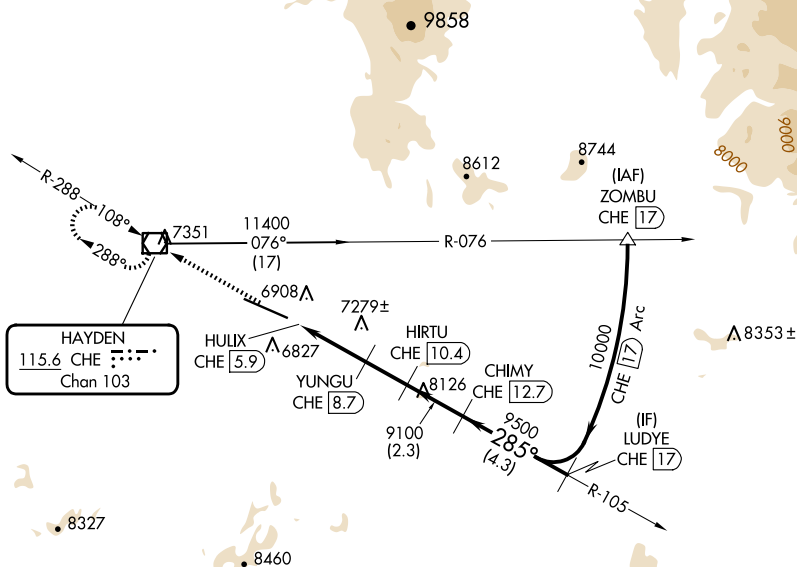
25163

VOR-B  
YAMPA VALLEY (HDN)

**MISSED APPROACH:** Climb to 9900 direct CHE VOR/DME and hold, continue climb-in-hold to 9900.

**T** Rwy 28 helicopter visibility reduction below  $\frac{3}{4}$  SM NA.

AWOS-3PT <b>119.275</b>	DENVER CENTER <b>120.475 235.975</b>	UNICOM <b>123.0 (CTAF) 0</b>
----------------------------	---	---------------------------------



CATEGORY	A	B	C	D
<b>C</b> CIRCLING	7900-1¼ 1294 (1300-1¼)	7900-1½ 1294 (1300-1½)	7900-3 1294 (1300-3)	8200-3 1594 (1600-3)

YAMPA VALLEY (HDN)  
VOR-B

SW-1, 07 AUG 2025 to 04 SEP 2025