

HAYDEN, COLORADO

AL-5983 (FAA)

25163

WAAS CH <b>53410</b> <b>W10A</b>	APP CRS <b>104°</b>	Rwy Ldg <b>9490</b> TDZE <b>6591</b> Apt Elev <b>6606</b>
--	------------------------	---

RNAV (GPS) Y RWY 10  
YAMPA VALLEY (HDN)

RNP APCH-GPS

**T** Rwy 10 helicopter visibility reduction below  $\frac{3}{4}$  SM NA.  
**A** Inop table does not apply to \*LPV all Cats, LNAV/VNAV all Cats, and LNAV Cats C/D. For uncompensated Baro-VNAV systems, LNAV/VNAV NA below -28°C or above 54°C.

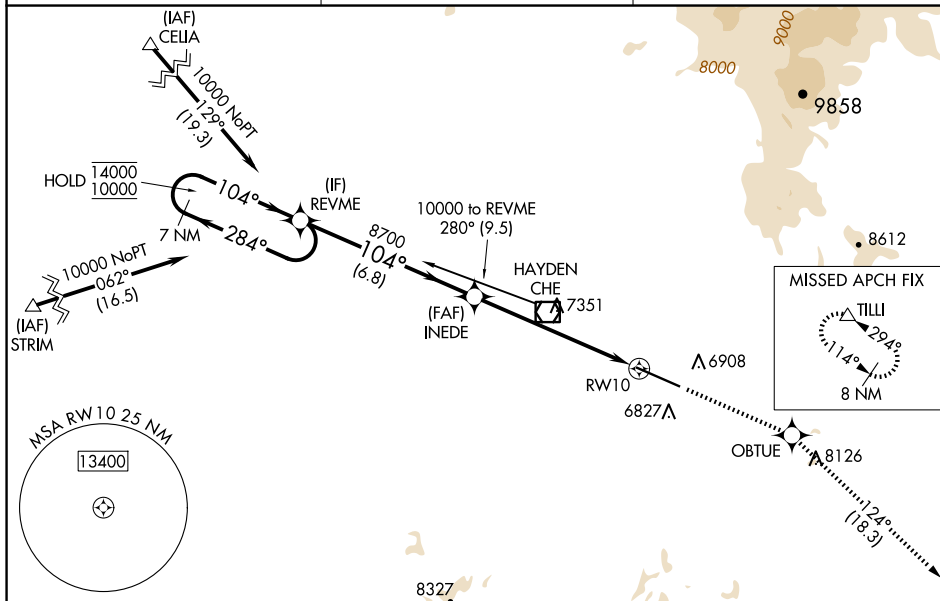
MALSF



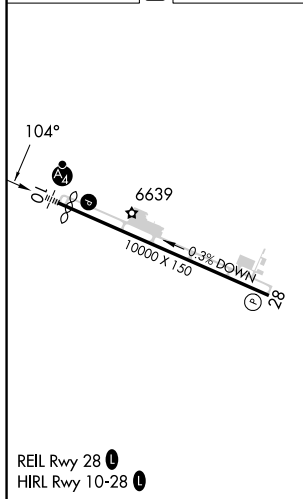
**MISSED APPROACH:** Climb to 13700 direct OBTUE and on track 124° to TILLI and hold, continue climb-in-hold to 13700.

\* Missed approach requires minimum climb of 295 feet per NM to 8700.

AWOS-3 <b>119,275</b>	DENVER CENTER <b>120,475 235,975</b>	UNICOM <b>123.0 (CTAF) 0</b>
--------------------------	---	---------------------------------



ELEV 6606	<b>D</b>	TDZE 6591
-----------	----------	-----------

[illegible]

HAYDEN, COLORADO

Amdt 4 24MAR22

40°29'N-107°13'W

YAMPA VALLEY (HDN)

RNAV (GPS) Y RWY 10