

HAYDEN, COLORADO

AL-5983 (FAA)

25163

LOC/DME I-HDN 109.9 Chan 36	APP CRS 104°	Rwy Ldg 9490 TDZE 6591 Apt Elev 6606
---	------------------------	---

APP CRS
104°

Rwy Ldg	9490
TDZE	6591
Apt Elev	6606

ILS or LOC RWY 10
YAMPA VALLEY (HDN)

DME required.

T
A NA Inop table does not apply to S-ILS 10* all
Cats and S-LOC 10 Cats C/D. For inop ALS,
increase S-ILS 10 all Cats visibility to 2½ SM.

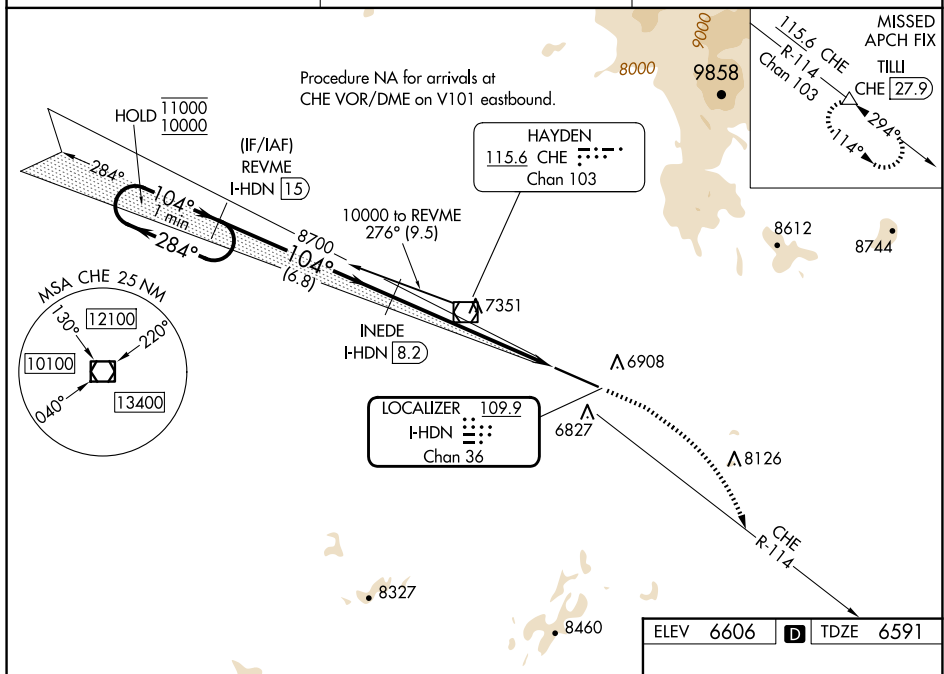
MALSF



MISSED APPROACH: Climb to 8000 then climbing right turn to 13300 on heading 130° and on CHE VOR/DME R-114 to TILLU/CHE 27.9 DME and hold, continue climb-in-hold to 13300. *Missed approach requires minimum climb of 307 feet per NM to 8700.

AWOS-3PT
119.275

DENVER CENTER
120.475 235.975

UNICOM
123.0 (CTAF) **L**

One Minute Holding Pattern

REVME I-HDN 15.0

11000 ← 284°

10000 → 104°

GS 3.00°

TCH 55

8700

104°

8700

6.8 NM

3 NM

3.5 NM

1.7 NM

13300

130°

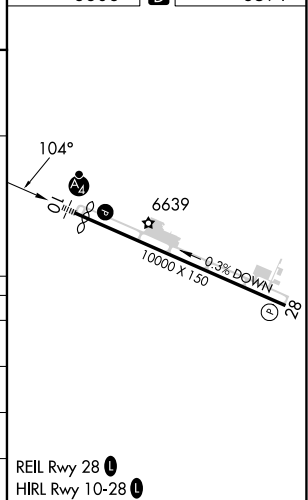
I-HDN 5.2

I-HDN 1.7

TILLI

CHE R-114

ELEV	6606		TDZE	6591
------	------	---	------	------



HAYDEN, COLORADO

Amdt 1A 16MAY24

40°29'N-107°13'W

YAMPA VALLEY (HDN)

ILS or LOC RWY 10

SW-1, 07 AUG 2025 to 04 SEP 2025