

LYONS, KANSAS

AL-5982 (FAA)

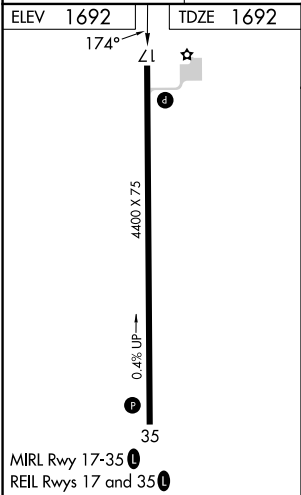
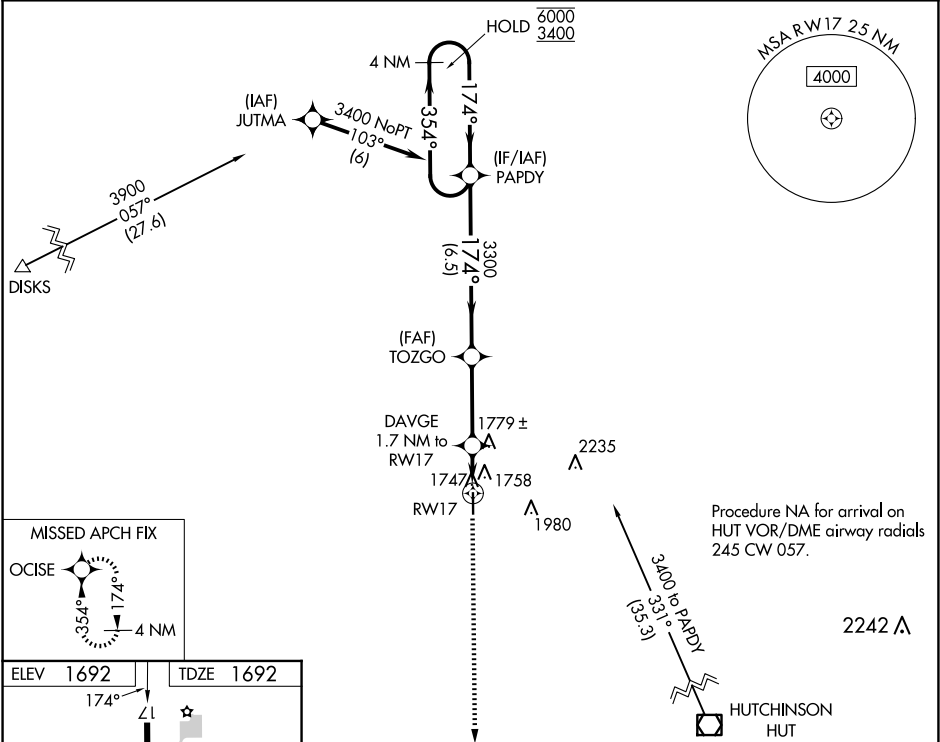
23054

WAAS CH 99339 W17A	APP CRS 174°	Rwy Idg TDZE Apt Elev	4400 1692 1692
--	------------------------	-----------------------------	---

RNAV (GPS) RWY 17
LYONS-RICE COUNTY MUNI (LYO)

RNP APCH. ▼ Rwy 17 helicopter visibility reduction below 1 SM NA. ▲ Straight-in/Circling Rwy 17 NA at night. When local altimeter setting not received, use Hutchinson altimeter setting.	MISSED APPROACH: Climb to 3400 direct OCISE and hold.
--	--

AWOS-3P 119.925	KANSAS CITY CENTER 118.8 322.425	UNICOM 122.8 (CTAF) 0
---------------------------	--	---------------------------------



4 NM Holding Pattern		PAPDY	VGSI and descent angles not coincident (VGSI Angle 3.00/TCH 40).		3400	OCISE
6000 ← 354°		174° →	TOZGO		3300	
		174° →	3.00° ≥ TCH 45		2260	
		3300	DAVGE 1.7 NM to RWY 17			
		6.5 NM	3.2 NM		1.7 NM	
CATEGORY	A	B	C	D		
LP MDA	2080-1	388 (400-1)	NA			
LNAV MDA	2120-1	428 (500-1)	NA			
CIRCLING	2260-1	568 (600-1)	NA			

LYONS, KANSAS
Orig-A 08NOV18

38°20'N-98°14'W

LYONS-RICE COUNTY MUNI (LYO)
RNAV (GPS) RWY 17

NC-2, 07 AUG 2025 to 04 SEP 2025

NC-2, 07 AUG 2025 to 04 SEP 2025