
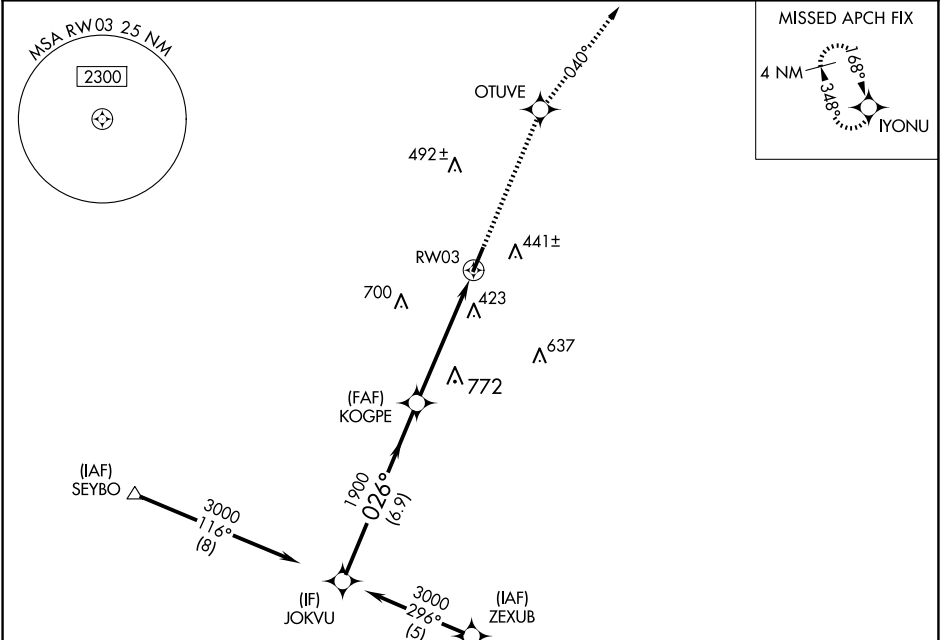


WAAS CH <b>70508</b> <b>W03A</b>	APP CRS <b>026°</b>	Rwy Idg TDZE Apt Elev	<b>5001</b> <b>202</b> <b>202</b>
--	------------------------	-----------------------------	---


RNAV (GPS) RWY 3  
TELFAIR-WHEELER (MQW)

RNP APCH-GPS.	MISSED APPROACH: Climb to 3000 direct OTUVE and via 040° track to IYONU and hold.
 Rwy 3 helicopter visibility reduction below 1 SM NA. For uncompensated Baro-VNAV systems, LNAV/VNAV NA below -15°C or above 54°C. Procedure NA at night.	

AWOS-3PT <b>120.0</b>	VDI AWOS-3 <b>119.925</b>	JACKSONVILLE CENTER <b>127.575 269.025</b>	CTAF <b>122.90</b>
--------------------------	------------------------------	---	-----------------------

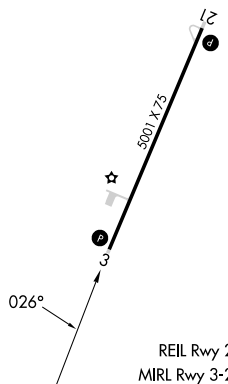


ELEV 202		TDZE 202	
----------	--	----------	--



3000  
tr 040°  
N1YIB

<p>VGSI and RNAV glidepath not coincident (VGSI Angle 3.00/TCH 44).</p> <p>JOKVU 3000 026° KOGPE 1900 RW03</p> <p>6.9 NM 5.2 NM</p>				
CATEGORY	A	B	C	D
LPV DA	593-1½ 391 (400-1½)			
LNAV/VNAV DA	903-2 701 (800-2)			903-2¼ 701 (800-2¼)
LNAV MDA	1160-1¼ 958 (1000-1¼)	1160-1½ 958 (1000-1½)	1160-3 958 (1000-3)	
CIRCLING	1160-1¼ 958 (1000-1¼)	1160-1½ 958 (1000-1½)	1160-3 958 (1000-3)	



026° 3001 X 7.5

REIL Rwy 21  
MIRL Rwy 3-21