

WAAS CH 86444 W06A	APP CRS 059°	Rwy Idg 5001 TDZE 819 Apt Elev 819
--	------------------------	---

RNAV (GPS) RWY 6

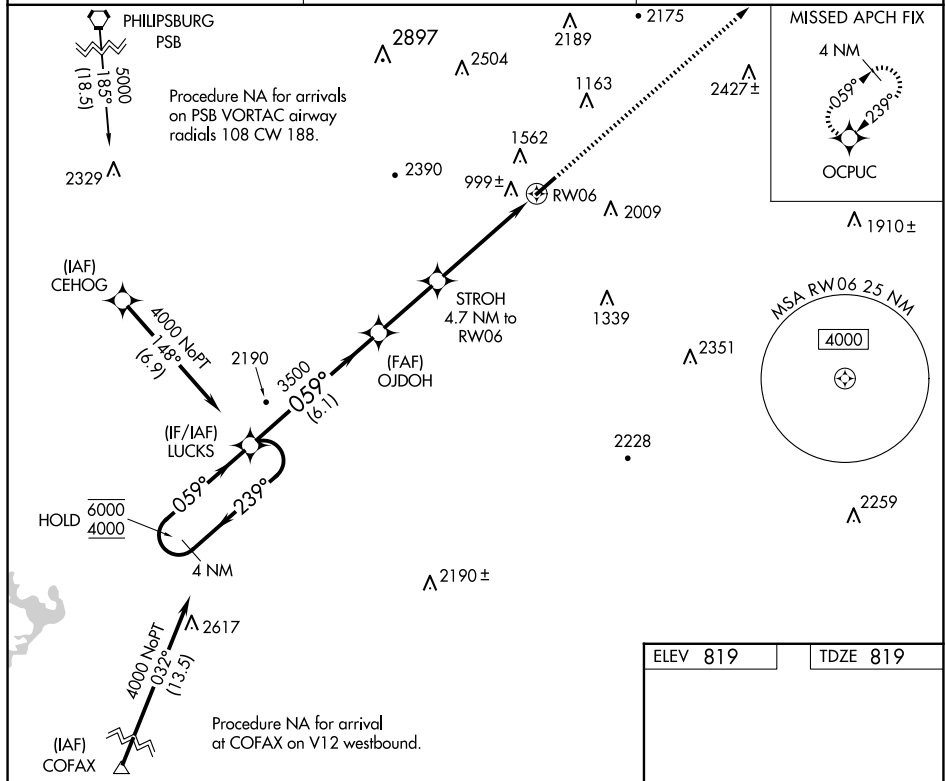
MIFFLIN COUNTY (RVL)

RNP APCH - GPS.

T
A Rwy 6 helicopter visibility reduction below $\frac{3}{4}$ SM NA. Baro-VNAV NA.

MISSED APPROACH:
Climb to 4000 direct
OCPUC and hold.

AWOS-3PT 123.85	NEW YORK CENTER 134.8 338.3	UNICOM 122.7 (CTAF) ①
---------------------------	---------------------------------------	---------------------------------



CATEGORY	A	B	C	D
LPV DA		1314-1 $\frac{3}{8}$	495 (500-1 $\frac{3}{8}$)	
LNAV/VNAV DA		1506-2	687 (700-2)	
LNAV MDA	1580-1 761 (800-1)	1580-1 $\frac{1}{4}$ 761 (800-1 $\frac{1}{4}$)	1580-2 $\frac{1}{2}$	761 (800-2 $\frac{1}{2}$)