

REEDSVILLE, PENNSYLVANIA

AL-5979 (FAA)

23222

WAAS CH <b>78107</b> <b>W24A</b>	APP CRS <b>239°</b>	Rwy Idg TDZE Apt Elev	<b>5001</b> <b>818</b> <b>819</b>
--	------------------------	-----------------------------	---

RNAV (GPS) RWY 24  
MIFFLIN COUNTY (RVL)

RNP APCH - GPS.	
-----------------	--



Rwy 24 helicopter visibility reduction below  $\frac{3}{4}$  SM NA. Baro-VNAV NA.

**MISSED APPROACH:**  
Climb to 4000 direct  
LUCKS and hold.

AWOS-3PT <b>123.85</b>	NEW YORK CENTER <b>134.8 338.3</b>	UNICOM <b>122.7 (CTAF) ①</b>
---------------------------	---------------------------------------	---------------------------------

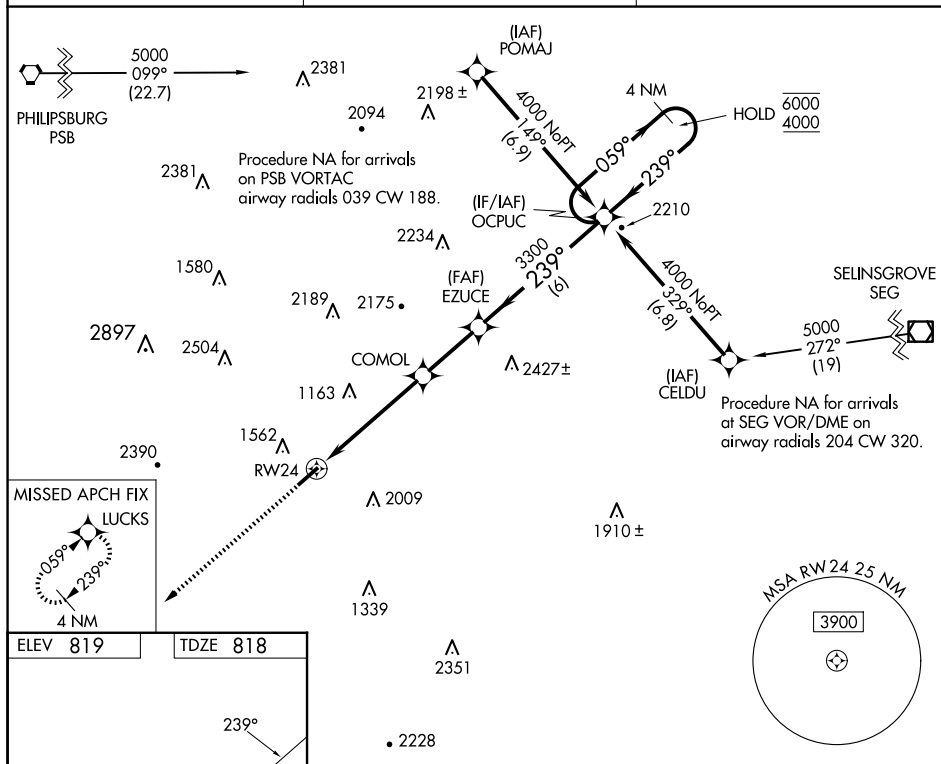


Diagram of the RW24 holding pattern. The pattern is a series of turns starting from RW24, heading 059° for 6.00 NM, then turning 239° for 2.39 NM, then 059° for 2.46 NM, then 239° for 2.2 NM, then 059° for 2.6 NM, and finally 239° for 6 NM to OCPUC. The diagram also shows the 4 NM Holding Pattern and the GP 3.00° TCH 42. The diagram is labeled with '500 X 75' and 'RW24'.

CATEGORY	A	B	C	D
LPV DA		1506-2	688 (700-2)	
LNAV/VNAV DA		1870-4	1052 (1100-4)	
LNAV MDA	1780-1¼ 962 (1000-1¼)	1780-1½ 962 (1000-1½)	1780-3	962 (1000-3)

REIL Rwy 6 and 24 **L**  
MIRL Rwy 6-24 **L**

REEDSVILLE, PENNSYLVANIA

Amdt 1 06OCT22

MIFFLIN COUNTY (RVL)

40°41'N-77°38'W

## RNAV (GPS) RWY 24

NE-4, 07 AUG 2025 to 04 SEP 2025