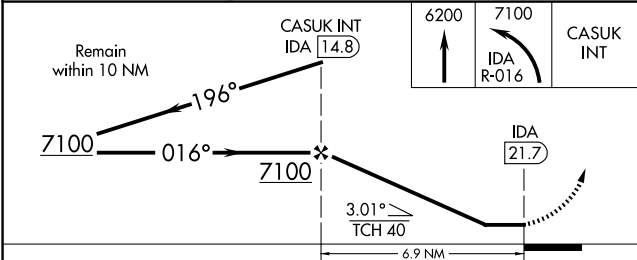
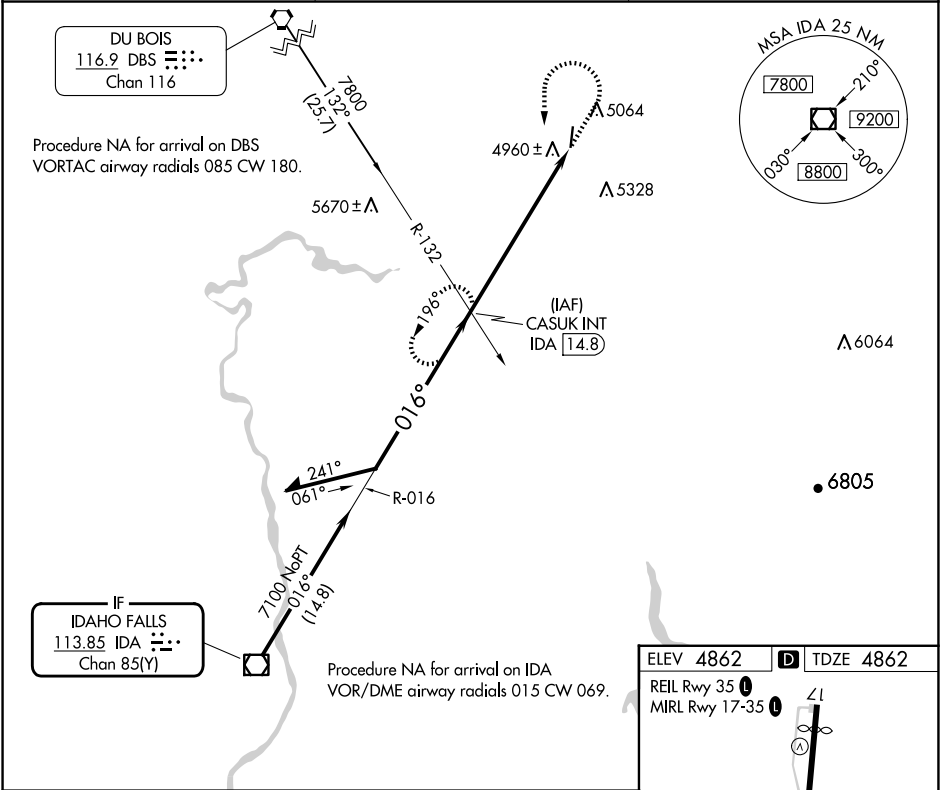


VOR/DME IDA 113.85 Chan 85 (Y)	APP CRS 016°	Rwy Ldg TDZE Apt Elev 4862
--	------------------------	---

VOR RWY 35
REXBURG-MADISON COUNTY (R.XE)

▼ Rwy 35 helicopter visibility reduction below 1 SM NA. ▲ Straight-in Rwy 35 NA at night, Circling Rwy 35 NA at night.	MISSED APPROACH: Climb to 6200 then climbing left turn to 7100 on IDA R-016 to CASUK INT/IDA 14.8 DME and hold.
---	---

ASOS 135,075	SALT LAKE CENTER 128.35 239.25	UNICOM 122.8 (CTAF) 0
------------------------	--	--



ELEV 4862	D TDZE 4862
REIL Rwy 35 0	MIRL Rwy 17-35 0
FAF to MAP 6.9 NM	
Knots	60 90 120 150 180
Min:Sec	6:54 4:36 3:27 2:46 2:18

CATEGORY	A	B	C	D
S-35	5680-1 818 (900-1)	5680-1¼ 818 (900-1¼)	5680-2½ 818 (900-2½)	
C CIRCLING	5680-1¼ 818 (900-1¼)		5680-2½ 818 (900-2½)	5760-3 898 (900-3)

NW-1, 07 AUG 2025 to 04 SEP 2025

NW-1, 07 AUG 2025 to 04 SEP 2025