

APP CRS
351°

Rwy Ldg
TDZE
4862

Apt Elev
4862

RNAV (GPS) RWY 35
REXBURG-MADISON COUNTY (R.XE)

RNP APCH - GPS.

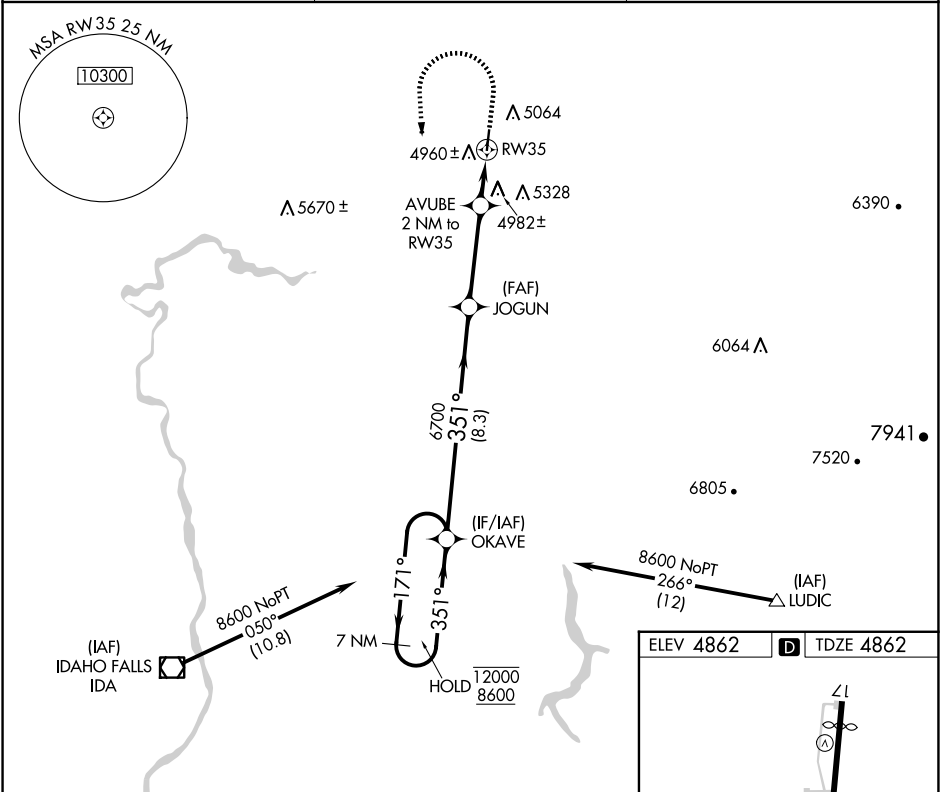
▼

▲

Rwy 35 helicopter visibility reduction below ¾ SM NA.

MISSED APPROACH: Climb to 5900 then climbing left turn to 8600 direct OKAVE and hold.

ASOS 135.075	SALT LAKE CENTER 128.35 239.25	UNICOM 122.8 (CTAF) 0
-----------------	-----------------------------------	--------------------------



7 NM Holding Pattern

OKAVE

12000
8600

171°

351°

351°

6700

3.00° TCH 40

5540

8.3 NM

3.6 NM

0.9 NM

1.1 NM

5900

8600

OKAVE

AVUBE 2 NM to RW35

1.1 NM to RW35

RW35

CATEGORY	A	B	C	D
LNAB MDA	5240-1 378 (400-1)			
CIRCLING	5380-1 518 (600-1)	5580-1 718 (800-1)	5680-2½ 818 (900-2½)	5760-3 898 (900-3)

REIL Rwy 35 0
MIRL Rwy 17-35 0

4204 X 75

35

351°