

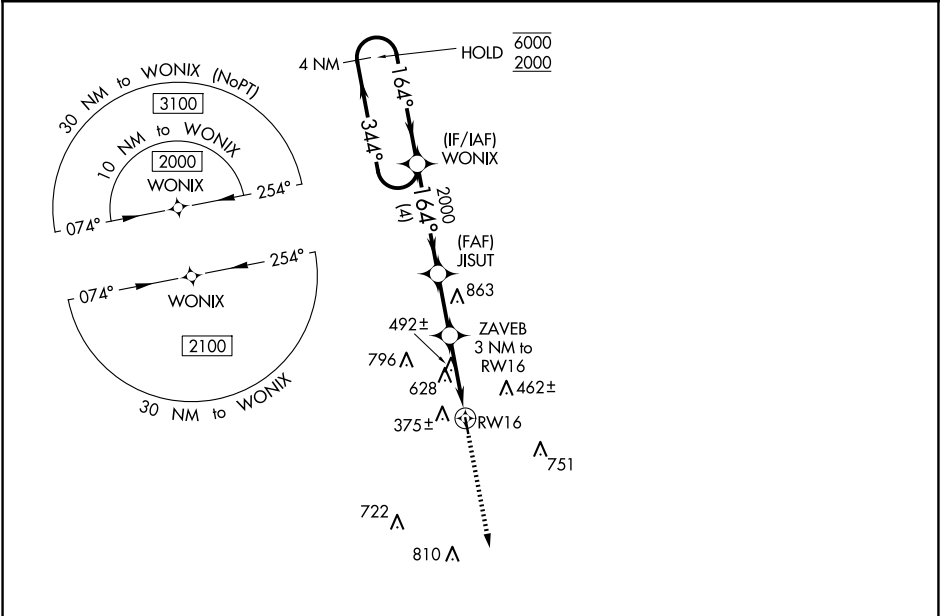
WAAS CH 87125 W16A	APP CRS 164°	Rwy Idg TDZE Apt Elev	3218 289 289
----------------------------------------	------------------------	-----------------------------	-----------------------------------------

RNAV (GPS) RWY 16

KENEDY RGNL (2R.9)

RNP APCH.	MISSED APPROACH: Climb to 2000 direct FORLU and hold.
▼ Procedure NA at night. When local alimeter setting not received, use Pleasanton alimeter setting. Rwy 16 helicopter visibility reduction below 1 SM NA.	

AWOS 3-PT 118.45	HOUSTON CENTER 134.6 322.5	UNICOM 123.0 (CTAF) 0
----------------------------	--------------------------------------	---------------------------------



4 NM Holding Pattern				Visual Segment - Obstacles.		2000	FORLU
WONIX				JISUT		FORLU	
6000 ← 344°				164° → 2000		FORLU	
2000 ← 164°				2000		FORLU	
4 NM				2.3 NM		3 NM	
CATEGORY	A	B	C	D			
LP MDA	860-1	571 (600-1)	NA				
LNAV MDA	1040-1	1040-1¼	NA				
	751 (800-1)	751 (800-1¼)					
REIL Rwy 16 MIRL Rwy 16-34 0							