

WAAS CH 86827 W12A	APP CRS 120°	Rwy Idg TDZE 1452 Apt Elev 1456
--	------------------------	---

RNAV (GPS) RWY 12

ELY MUNI (ELO)

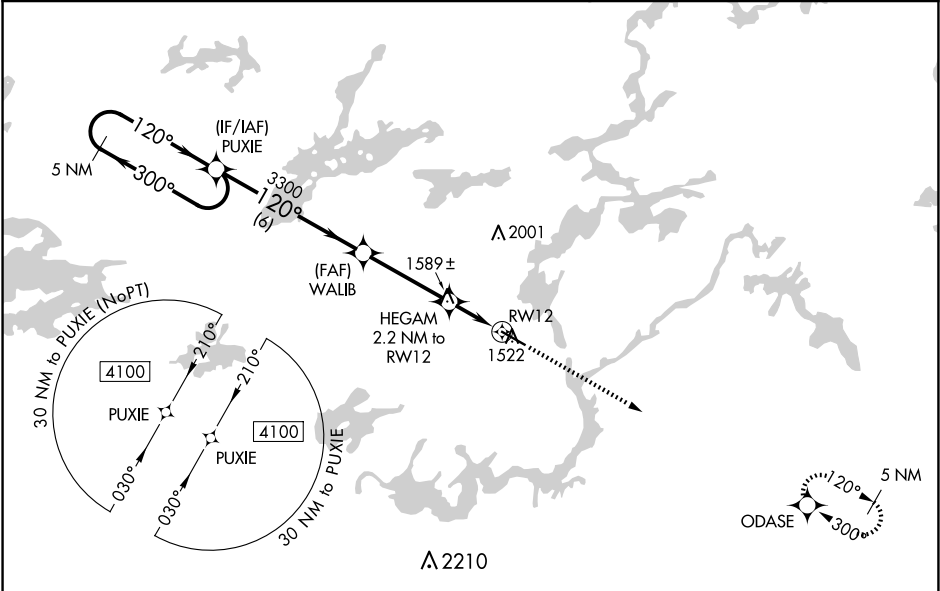
▼

⚠

Baro-VNAV NA when using Cook altimeter setting. For uncompensated Baro-VNAV systems, LNAV/VNAV NA below -17°C (2°F) or above 34°C (93°F). DME/DME RNP-0.3 NA. VDP NA when using Cook altimeter setting. When local altimeter setting not received, use Cook altimeter setting and increase all DA/MDA 100 feet; increase LPV visibility ¼ mile all Cats, LNAV/VNAV visibility ⅜ mile all Cats, and LNAV Cat C and D visibility ¼ mile.

MISSED APPROACH: Climb to 4100 direct ODASE and hold.

AWOS-3PT 132.025	MINNEAPOLIS CENTER 127.9 281.45	UNICOM 122.8 (CTAF) 1
----------------------------	---	---------------------------------



ELEV 1456

TDZE 1452

5 NM Holding Pattern

4100 ← 300°
→ 120°

GP 3.00°
TCH 40

PUXIE

3300

WALIB

3300

HEGAM

2.2 NM to RWY12

120° to RWY12

5596 X 100

4100 ODASE

*LNAV only.

*1.1 NM to RWY12

*2160

6 NM

3.5 NM

1.1 NM

1.1 NM

CATEGORY	A	B	C	D
LPV DA	1652-1 200 (200-1)			
LNAV/VNAV DA	1726-1 274 (300-1)			
LNAV MDA	1840-1 388 (400-1)	1840-1½ 388 (400-1½)		
CIRCLING	1920-1 464 (500-1)	1940-1 484 (500-1)	1940-1½ 484 (500-1½)	2360-3 904 (1000-3)

MIRL Rwy 12-30 1

REIL Rwys 12 and 30 1