

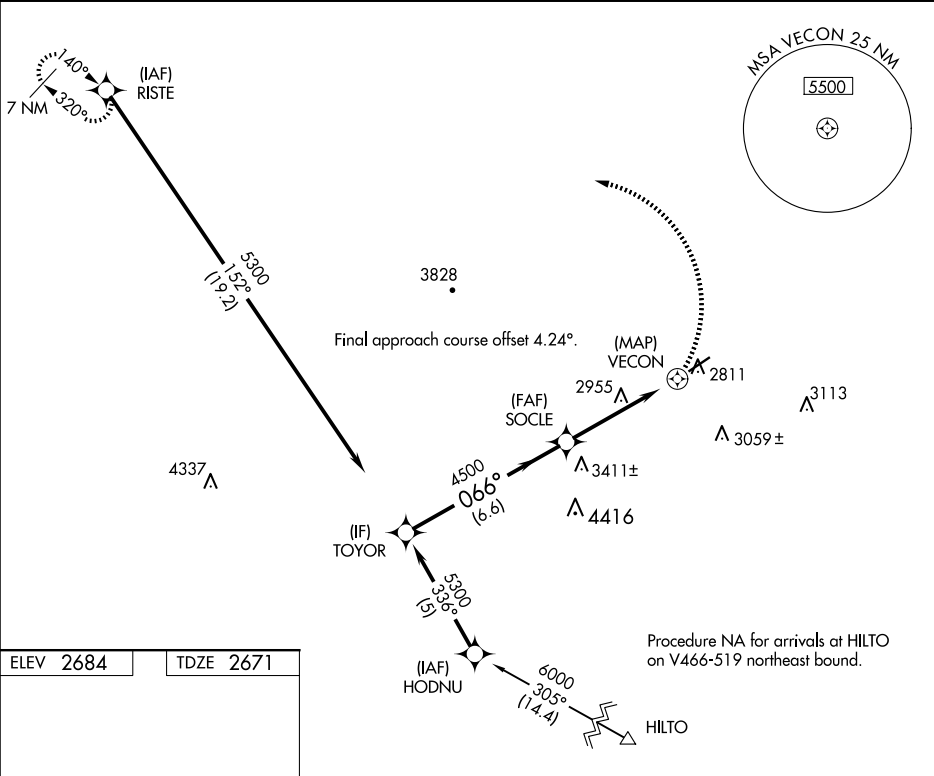
APP CRS	Rwy Idg	5131
066°	TDZE	2671
	Apt Elev	2684

RNAV (GPS) RWY 6

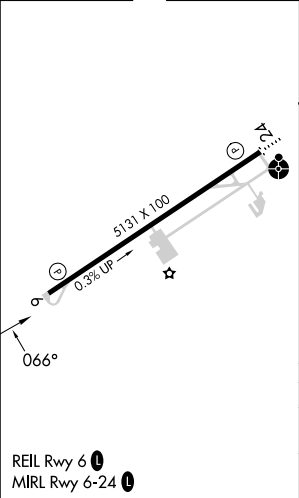
LONESOME PINE (LNP)

RNP APCH.	MISSED APPROACH: Climbing left turn to 6400 direct RISTE and hold.
<div>▼ Procedure NA at night.</div> <div>▲ Rwy 6 helicopter visibility reduction below 1 SM NA.</div>	

AWOS-3 118.6	INDIANAPOLIS CENTER 126.575 257.85	UNICOM 123.0 (CTAF) 0
-----------------	---------------------------------------	--------------------------



ELEV 2684	TDZE 2671
-----------	-----------



VGSI and descent angles not coincident (VGSI Angle 3.00/TCH 32).				6400	RISTE
CATEGORY	A	B	C	D	
LNAV MDA	3260-1	589 (600-1)	3260-1¾	589 (600-1¾)	
CIRCLING	3260-1 576 (600-1)	3360-1 676 (700-1)	3360-2 676 (700-2)	3560-2¾ 876 (900-2¾)	