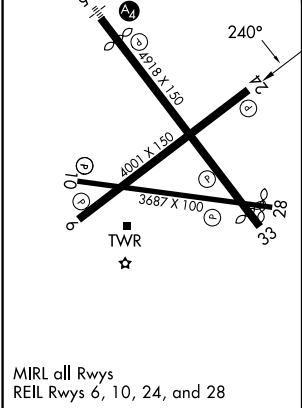
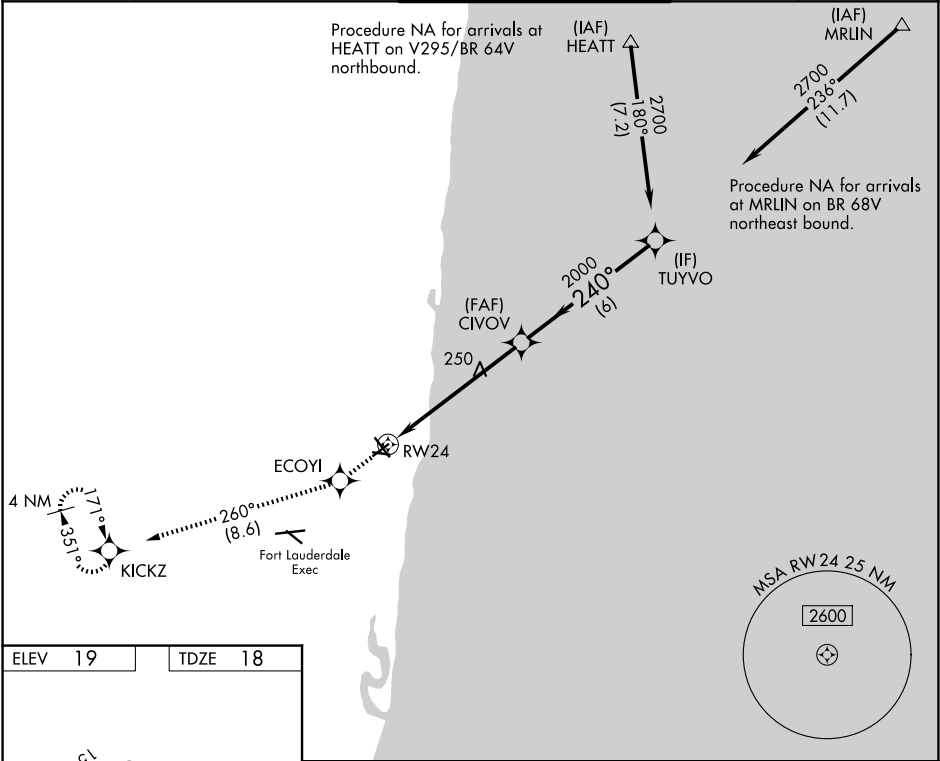


WAAS CH 70500 W24A	APP CRS 240°	Rwy Ldg TDZE 18 Apt Elev 19	RNAV (GPS) RWY 24 POMPANO BEACH AIRPARK (PMP)	
--	------------------------	---	---	--

DME/DME RNP-0.3 NA. When local altimeter setting not received, use Fort Lauderdale Exec altimeter setting. Helicopter visibility reduction below ¾ SM NA.

MISSED APPROACH: Climb to 2000 direct ECOYI and on track 260° to KICKZ and hold.

ATIS 120.55	MIAMI APP CON 119.7 306.3	POMPANO BEACH TOWER ★ 125.4 (CTAF) 0	GND CON 121.9	UNICOM 122.95
-----------------------	-------------------------------------	--	-------------------------	-------------------------



2000	ECOYI	tr 260°	KICKZ	VGSi and RNAV glidepath not coincident (VGSi Angle 3.50/TCH 49).	
*RNAV only.				CIVOV	TUYVO
*1.3 NM to RWY 24				2000	2700
RWY 24				2000	GP 3.00° TCH 44
1.3				4.7 NM	6 NM
CATEGORY	A	B	C	D	
LPV DA	319-1	301 (300-1)	NA	NA	
RNAV MDA	500-1	482 (500-1)	NA	NA	
CIRCLING	660-1	641 (700-1)	NA	NA	