

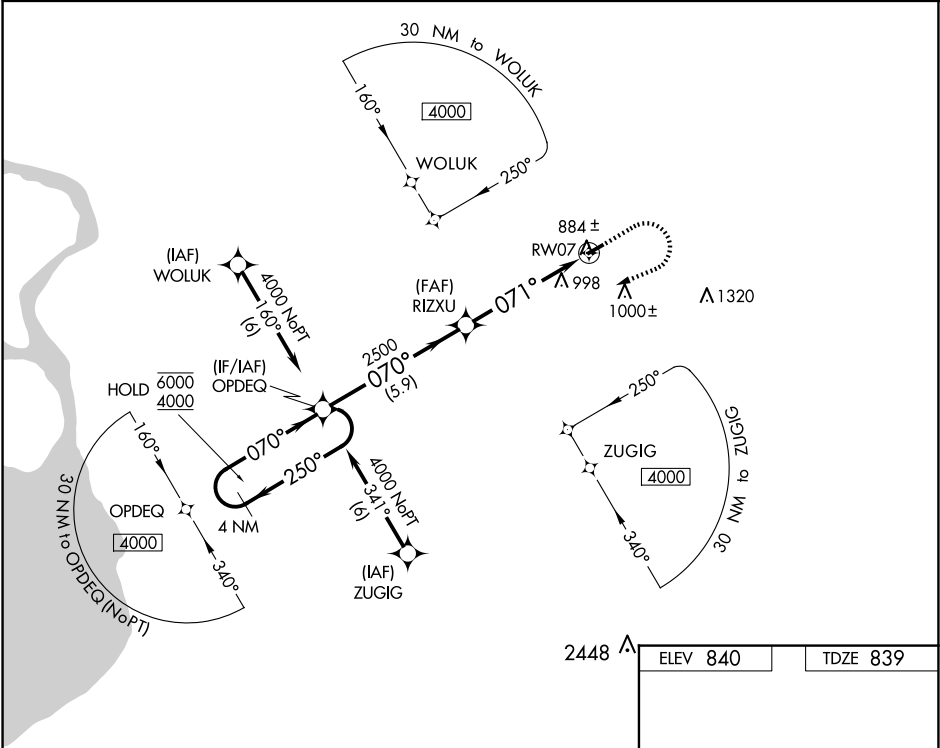
WAAS CH 93633 W07A	APP CRS 071°	Rwy Ldg TDZE 839 Apt Elev 840
--	------------------------	---

RNAV (GPS) RWY 7

AKRON/JESSON FLD (9G3)

RNP APCH.	MISSED APPROACH: Climb to 1300 then climbing right turn to 4000 direct OPDEQ and hold, continue climb-in-hold to 4000.
▼ NA	Procedure NA at night. Use Buffalo altimeter setting. Rwy 7 helicopter visibility reduction below 1 SM NA.

BUF ASOS 135.35	BUFFALO APP CON 126.15 263.125	UNICOM 122.725 (CTAF) 0
---------------------------	--	-----------------------------------



Visual Segment - Obstacles.				1300	4000	OPDEQ
4 NM Holding Pattern				↑	↪	✧
OPDEQ				RIZXU		
6000 ← 250°				RW07		
4000 → 070°				2500		
				071°		
				5.9 NM		
				5.1 NM		
CATEGORY	A	B	C	D		
LP MDA	1180-1	341 (400-1)	NA			
LNAV MDA	1300-1	461 (500-1)	NA			
CIRCLING	1380-1	540 (600-1)	NA			