

WAAS CH <b>45609</b> <b>W31A</b>	APP CRS <b>313°</b>	Rwy Idg <b>4020</b> TDZE <b>640</b> Apt Elev <b>646</b>
--	------------------------	---

# RNAV (GPS) RWY 31

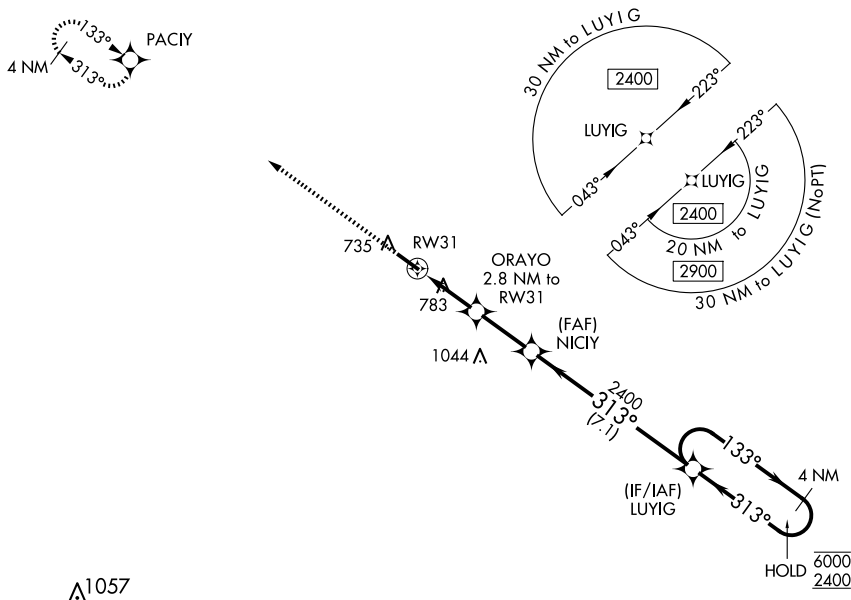
## WASHINGTON/WILKES COUNTY (IYY)

RNP APCH - GPS

**T** Rwy 31 helicopter visibility reduction below  $\frac{3}{4}$  SM NA.  
**A** For uncompensated Baro-VNAV systems, LNAV/VNAV NA below -16°C or above 54°C.

**MISSED APPROACH:**  
Climb to 2400 direct  
PACIY and hold.

AWOS-3 <b>118.375</b>	AUGUSTA APP CON★ <b>126.8 270.3</b>	UNICOM <b>122.7 (CTAF) 0</b>
--------------------------	--	---------------------------------



ELEV 646		TDZE 640
----------	--	----------

