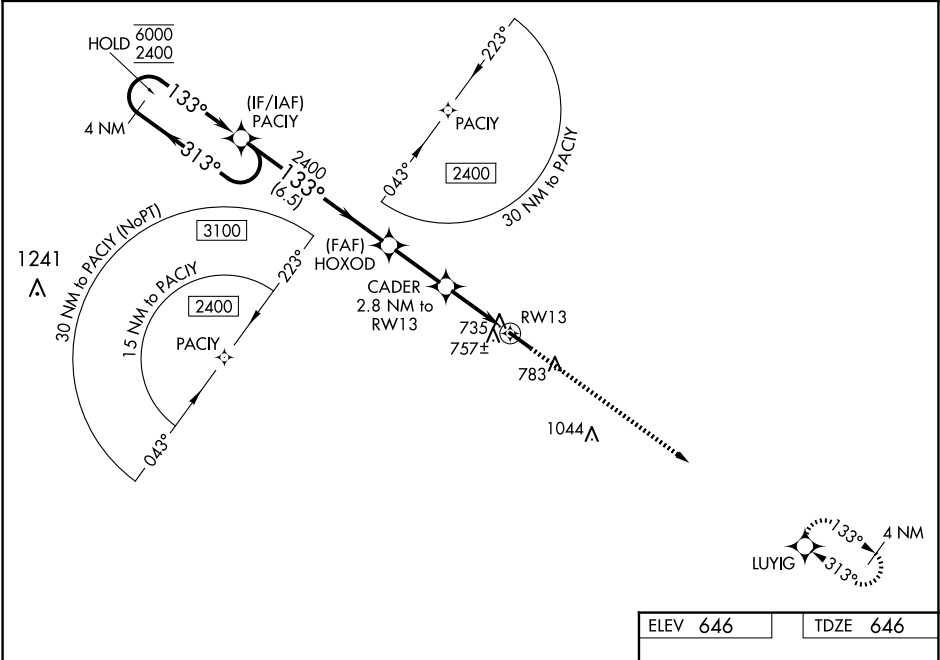


RNP APCH-GPS.		MISSED APPROACH: Climb to 2400 direct LUYIG and hold.
AWOS-3 <b>118.375</b>		UNICOM <b>122.7 (CTAF) 0</b>
AUGUSTA APP CON ★ <b>126.8 270.3</b>		



4 NM Holding Pattern		VGSI and RNAV glidepath not coincident (VGSI Angle 3.00/TCH 30).		2400	LUYIG
PACIY		HOXOD		2400	133° to RW13
6000 2400		CADER 2.8 NM to RW13		1600	1.1 NM to RW13
GP 3.00° TCH 52		RW13		1.1	5020 X 75
6.5 NM		2.5 NM		1.7 NM	0.38 UPQ
CATEGORY	A	B	C	D	
LPV DA	958- <sup>7</sup> / <sub>8</sub>	312 (400- <sup>7</sup> / <sub>8</sub> )		NA	
RNAV/VNAV DA	907- <sup>7</sup> / <sub>8</sub>	261 (300- <sup>7</sup> / <sub>8</sub> )		NA	
RNAV MDA	1020-1	374 (400-1)		NA	
CIRCLING	1080-1 434 (500-1)	1100-1 454 (500-1)	1100-1½ 454 (500-1½)	NA	MIRL Rwy 13-31 0