

|  |                        |   |
|--|------------------------|---|
| WAAS<br>CH <b>45647</b><br><b>W36A</b> | APP CRS<br><b>003°</b> | Rwy Ldg<br>TDZE <b>469</b><br>Apt Elev <b>472</b> |
|--|------------------------|---|

RNAV (GPS) RWY 36

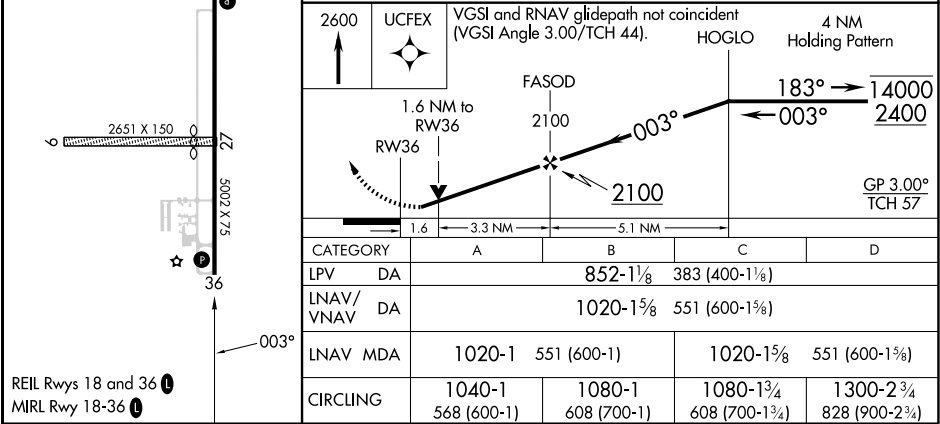
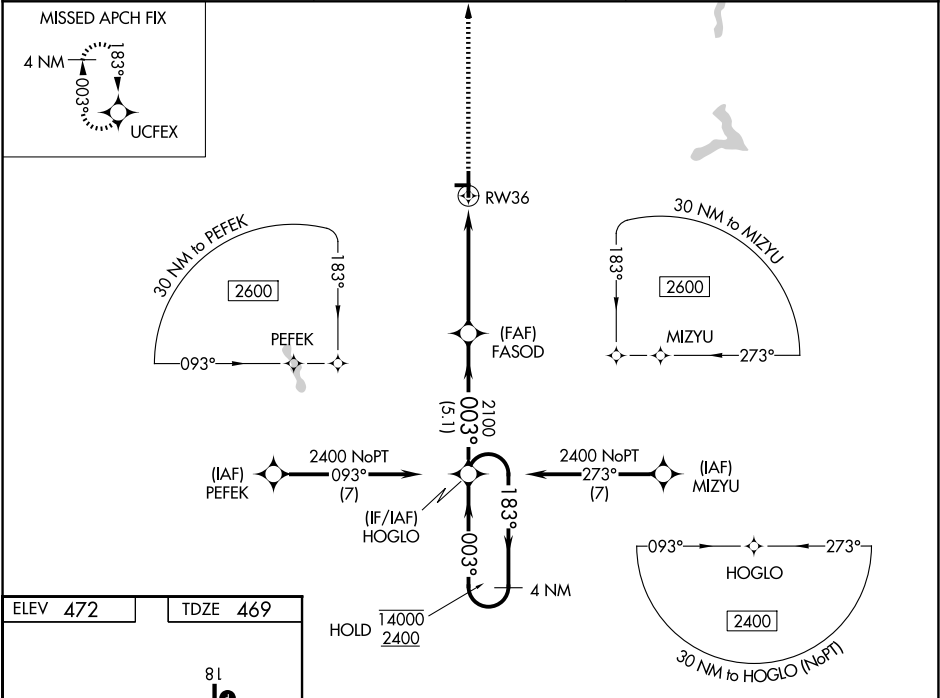
DAVISS COUNTY(DC'Y)

RNP APCH - GPS.

For uncompensated Baro-VNAV systems, LNAV/VNAV NA below -15°C or above 54°C.  
Rwy 36 helicopter visibility reduction below ¾ SM NA. Circling Rwy 9, 27 NA.

MISSED APPROACH:  
Climb to 2600 direct  
UCFEX and hold.

|                            |  |                                 |
|----------------------------|--|---------------------------------|
| AWOS-3PT<br><b>119.075</b> | EVANSVILLE APP CON ★<br><b>125.6 343.7</b> | UNICOM<br><b>122.8 (CTAF) 0</b> |
|----------------------------|--|---------------------------------|



EC-2, 07 AUG 2025 to 04 SEP 2025

EC-2, 07 AUG 2025 to 04 SEP 2025