

WAAS CH 86436 W18A	APP CRS 183°	Rwy Ldg TDZE 467 Apt Elev 472
--	------------------------	---

RNAV (GPS) RWY 18

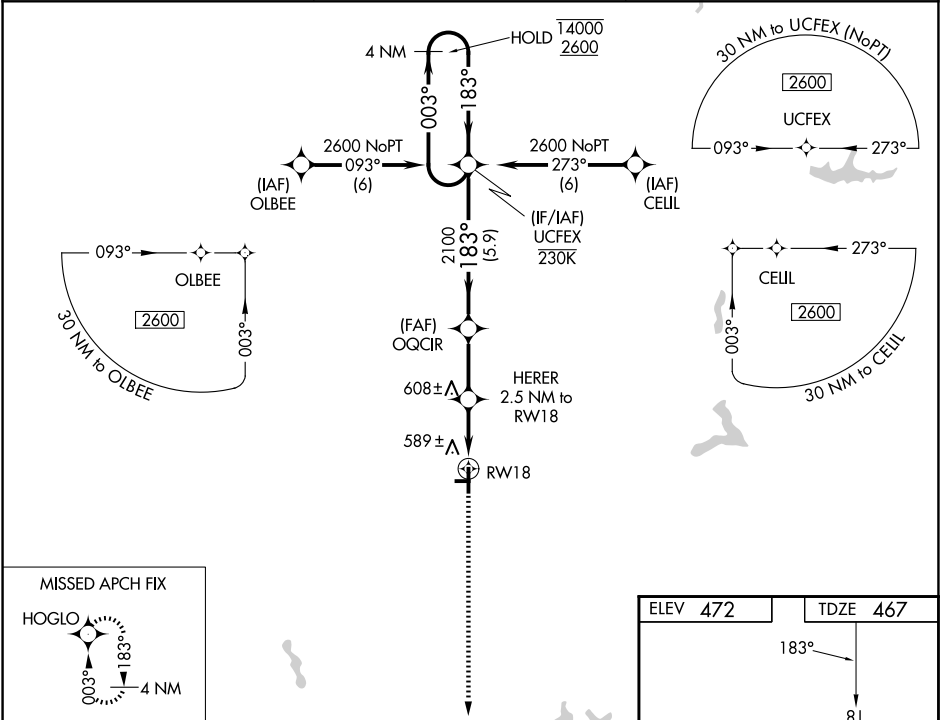
DAVISS COUNTY (DCY)

RNP APCH - GPS.

Circling NA to Rwys 9 and 27. Circling to Rwy 36 NA at night. For uncompensated Baro-VNAV systems, LNAV/VNAV NA below -15°C or above 54°C.

MISSED APPROACH:
Climb to 2200 direct
HOGLO and hold.

AWOS-3PT 119.075	EVANSVILLE APP CON ★ 125.6 343.7	UNICOM 122.8 (CTAF) 0
----------------------------	--	--



4 NM Holding Pattern		UCFEX		OQCIR	HERER 2.5 NM to RW18	2200	HOGLO
14000 ← 003°		2600 → 183°		2100	1280	1.1 NM to RW18	
GP 3.00° TCH 43		5.9 NM		2.5 NM	1.4 NM	1.1	
CATEGORY	A	B	C	D			
LPV DA	778-1		311 (400-1)				
LNAV/VNAV DA	750-1		283 (300-1)				
LNAV MDA	840-1		373 (400-1)				
CIRCLING	1020-1 548 (600-1)	1060-1 588 (600-1)	1060-1½ 588 (600-1½)	1300-2¾ 828 (900-2¾)			

ELEV 472

TDZE 467

183°

81

2651 X 150

27

5002 X 75

36

REIL Rwys 18 and 36 **0**

MIRL Rwy 18-36 **0**