

VOR/DME PSC

113.75

Chan 84(Y)

APP CRS

090°

Rwy Ldg TDZE

N/A

Apt Elev

N/A

394

VOR/DME-A

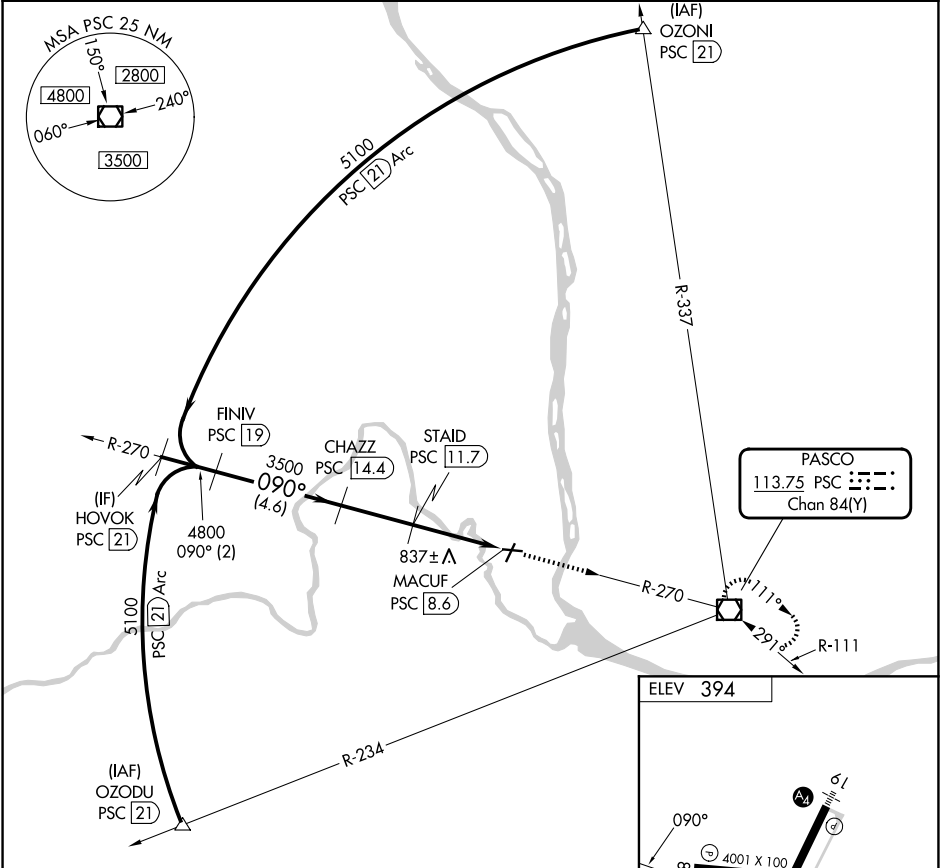
RICHLAND (RLD)

NA

When local altimeter setting not received, use Pasco altimeter setting and increase all MDA 40 feet.

MISSED APPROACH: Climb to 3000 direct PSC VOR/DME and hold.

AWOS-3PT 132.675	SPOKANE APP CON ★ 128.75 377.2	CLNC DEL 122.4	UNICOM 122.7 (CTAF) 1
---------------------	-----------------------------------	-------------------	--------------------------



HOVOK PSC 21	FINIV PSC 19	CHAZZ PSC 14.4	STAID PSC 11.7	MACUF PSC 8.6
5100	4800	3500	1540	
2 NM	4.6 NM	2.7 NM	3.1 NM	
CATEGORY	A	B	C	D
CIRCLING	1140-1	746 (800-1)	1200-2¼ 806 (900-2¼)	1940-3 1546 (1600-3)

ELEV 394

090°

4001 X 100

4000 X 75

436

REIL Rwys 1 and 19 1
MIRL Rwy 1-19 and 8-26 1