

WAAS CH 77903 W26A	APP CRS 259°	Rwy Ldg TDZE Apt Elev	4001 390 394
--	------------------------	-----------------------------	---

RNAV (GPS) RWY 26

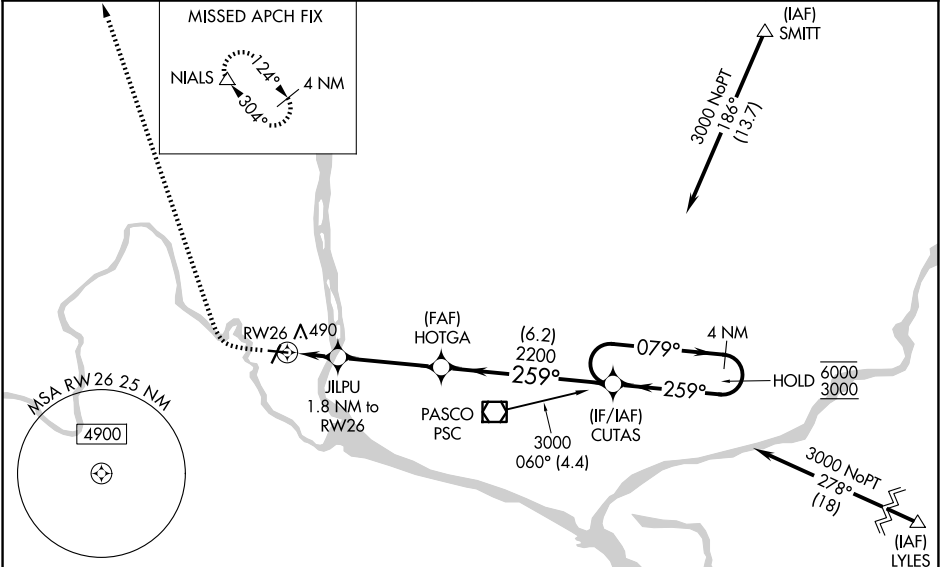
RICHLAND (R.LD)

RNP APCH - GPS.

For uncompensated Baro-VNAV systems, LNAV/VNAV NA below -12°C or above 54°C. Rwy 26 helicopter visibility reduction below ¾ SM NA. Baro-VNAV and VDP NA when using PSC altimeter setting. When local altimeter setting not received, use PSC altimeter setting and increase LPV DA to 666 feet; increase LNAV/VNAV DA to 671 feet; increase all MDAs 20 feet and Circling visibility Cot C ¼ SM.

MISSED APPROACH: Climb to 900 then climbing right turn to 3500 direct NIALS and hold.

AWOS-3PT 132.675	SPOKANE APP CON ★ 128.75 377.2	CLNC DEL 122.4	UNICOM 122.7 (CTAF) 0
----------------------------	--	--------------------------	--



ELEV 394	TDZE 390
-----------------	-----------------

Procedure NA for arrival on PSC VOR/DME
airway radials 306 CW 153.

900 3500 NIALS

JILPU 1.8 NM to RW26

HOTGA 2200

CUTAS 4 NM Holding Pattern

0.9 NM to RW26

0.9 NM

3.7 NM

6.2 NM

1020

2200

259°

079°

6000 3000

GP 3.00° TCH 52

REIL Rwy 1 and 19 **0**
MIRL Rwy 1-19 and 8-26 **0**