

LOC/DME I-RLD 110.5 Chan 42	APP CRS 189°	Rwy Ldg 4009 TDZE 390 Apt Elev 394
---	------------------------	--

LOC RWY 19
RICHLAND (RLD)

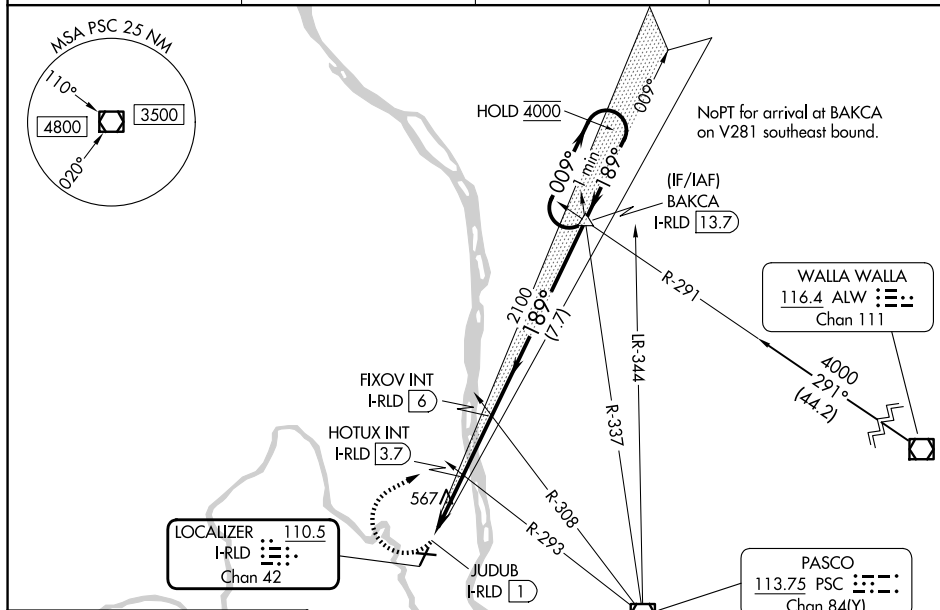
⚠ VDP NA when using PSC allimeter setting. For inop ALS, increase S-19 Cats C and D visibility to 3 SM. When local allimeter setting not received, use PSC allimeter setting and increase all MDAs 20 feet and increase HOTUX fix minimums S-LOC 19 visibility Cat C/D ½ SM, and Circling visibility Cat C ¼ SM. HOTUX fix minimum: For inop ALS, increase S-19 Cats C and D visibility to 1 ½ SM.

MALS

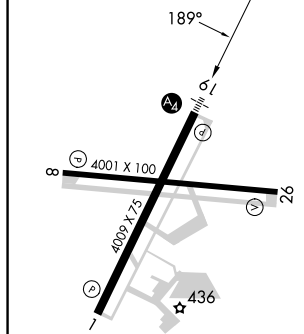


MISSED APPROACH: Climbing right turn to 4000 on heading 045° and on PSC VOR/DME R-337 to BAKCA INT/I-RLD 13.7 DME and hold, continue climb-in-hold to 4000.

AWOS-3PT 132.675	SPOKANE APP CON ★ 128.75 377.2	CLNC DEL 122.4	UNICOM 122.7 (CTAF) 0
----------------------------	--	--------------------------	--



ELEV 394	TDZE 390
----------	----------



REIL Rwy 1 and 19 L

MIRL Rwy 1-19 and 8-26 **L**

FAF to MAP 5 NM

Knots	60	90	120	150	180
Min:Sec	5:00	3:20	2:30	2:00	1:40

CATEGORY	A	B	C	D
S-19	1360-1 970 (1000-1)	1360-1¼ 970 (1000-1¼)	1360-2½	970 (1000-2½)
CIRCLING	1360-1¼ 966 (1000-1¼)	1360-1½ 966 (1000-1½)	1360-3 966 (1000-3)	1960-3 1566 (1600-3)

HOTUX FIX MINIMUMS (DUAL VOR RECEIVERS OR DME REQUIRED)

S-19	880-7/8 490 (500-7/8)	880-1½ 490 (500-1½)
CIRCLING	880-1 486 (500-1)	1000-1 606 (700-1)
	1200-2¼ 806 (900-2¼)	1960-3 1566 (1600-3)