

WAAS CH 42904 W16A	APP CRS 159°	Rwy ldg TDZE 207 Apt Elev 207	RNAV (GPS) RWY 16 HANOVER COUNTY MUNI (OFP)
--	------------------------	---	---

RNP APCH.

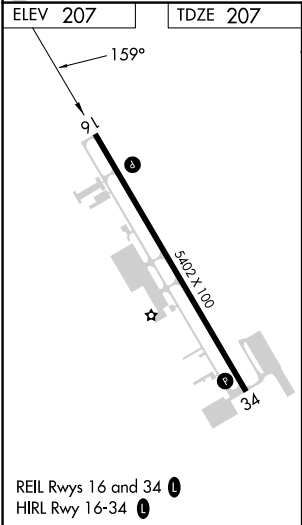
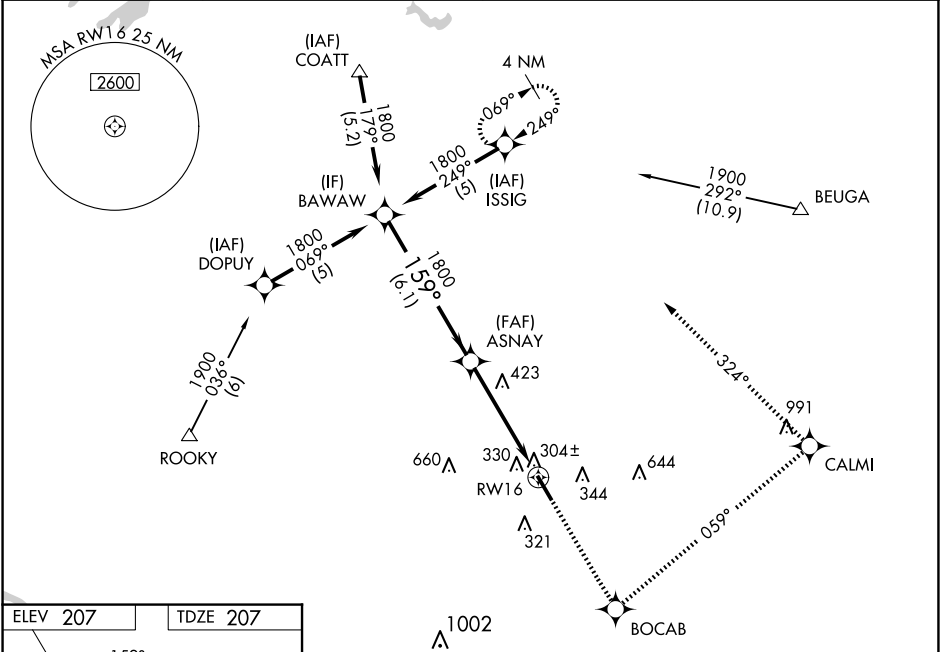
⚠




When local altimeter setting not received, use Richmond Intl altimeter setting and increase all DA 37 feet and all MDA 40 feet; increase LNAV/VNAV all Cats and LNAV Cats C/D visibility ¼ mile. Baro-VNAV NA when using Richmond Intl altimeter setting. For uncompensated Baro-VNAV systems LNAV/VNAV NA below -15°C or above 54°C. Rwy 16 helicopter visibility reduction below ¾ SM NA.

MISSED APPROACH:

Climb to 2000 direct BOCAV and left turn via 059° track to CALMI and left turn via 324° track to ISSIG and hold.

ASOS 119.025	POTOMAC APP CON (001°-185°) 126.4 307.2 (186°-360°) 126.75 307.2	CLNC DEL 125.4	UNICOM 122.7 (CTAF) 0
------------------------	--	--------------------------	---------------------------------



		<div>2000</div> <div>↑</div>		<div>BOCAB</div> <div>✧</div>		<div>tr 059°</div> <div></div>		<div>CALMI</div> <div>✧</div>		<div>tr 324°</div> <div></div>		<div>ISSIG</div> <div>✧</div>	
BAWAW													
Procedure Turn NA		ASNAV VGSi and RNAV glidepath not coincident (VGSi Angle 3.00/TCH 40).											
<div>1800</div>		<div>159°</div> <div>✕</div> <div>1800</div> <div>↗</div> <div>RW16</div>											
<div>GP 3.00°</div> <div>TCH 40</div>		<div>6.1 NM</div> <div>4.8 NM</div>											
CATEGORY	A		B		C		D						
LPV DA	535-1¼ 328 (400-1¼)												
LNAV/ VNAV DA	564-1¼ 357 (400-1¼)												
LNAV MDA	700-1 493 (500-1)					700-1¼ 493 (500-1¼)		700-1½ 493 (500-1½)					
 CIRCLING	700-1 493 (500-1)					900-2 693 (700-2)		1020-2¾ 813 (900-2¾)					