

WAAS CH <b>97625</b> <b>W36A</b>	APP CRS <b>355°</b>	Rwy Ldg <b>5000</b> TDZE <b>1195</b> Apt Elev <b>1219</b>
--	------------------------	---

## RNAV (GPS) RWY 36

HORNELL MUNI (HTF)

RNP APCH - GPS


 NA
  -18°C

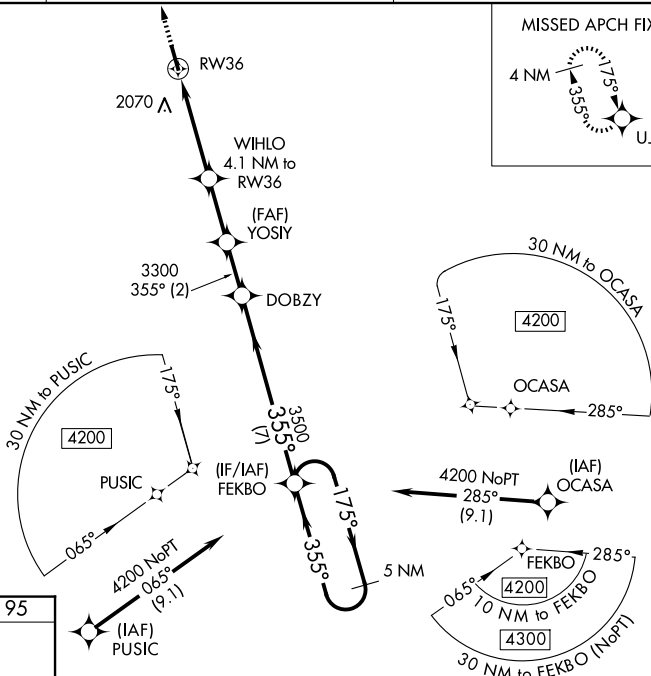
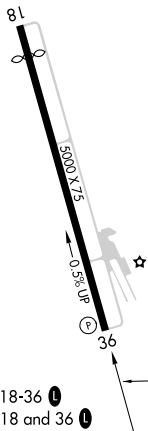
For uncompensated Baro-VNAV systems, LNAV/VNAV NA below -17°C or above 54°C. Helicopter visibility reduction below 3/4 SM NA. When local altimeter setting not received, use Dansville altimeter setting and increase all DA 105 feet, all MDA 120 feet and LPV all Cats visibility 3/8 mile, LNAV/VNAV all Cats visibility 1 mile, and LNAV Cat B visibility 1/4 mile and Cat C visibility 1/2 mile. VDP and Baro-VNAV NA with Dansville altimeter setting. Girdling Rwy 18 NA at night.

**MISSED APPROACH:**  
Climb to 3900 direct  
UJLE and hold.

AWOS-3  
118.475

CLEVELAND CENTER  
124,325 353.85

UNICOM  
122.7 (CTAF) **L**

ELEV 1219TDZE 1195

3900 ↑	UJILE ✦	WIHLO 4.1 NM to RW36 YOSIY 3300 DOBZY FEKBO 5 NM Holding Pattern 175° → 4200 ← 355° 355° 3500 GP 3.00 TCH 50		
* LNAV only.	* 2.8 NM to RW36	RW36 * 2540 3300 2.8 NM 1.3 2.4 NM 2 NM 7 NM		
CATEGORY	A	B	C	D
LPV DA	1660-1½ 465 (500-1½)			NA
LNAV/VNAV	2343-4 1148 (1200-4)			NA
LNAV MDA	2120-1¼ 925 (900-1¼)	2120-2½ 925 (900-2½)		NA
CIRCLING	2360-1¼ 1141 (1200-1¼)	2380-1½ 1161 (1200-1½)	2440-3 1221 (1300-3)	NA

RNAV (GPS) RWY 36