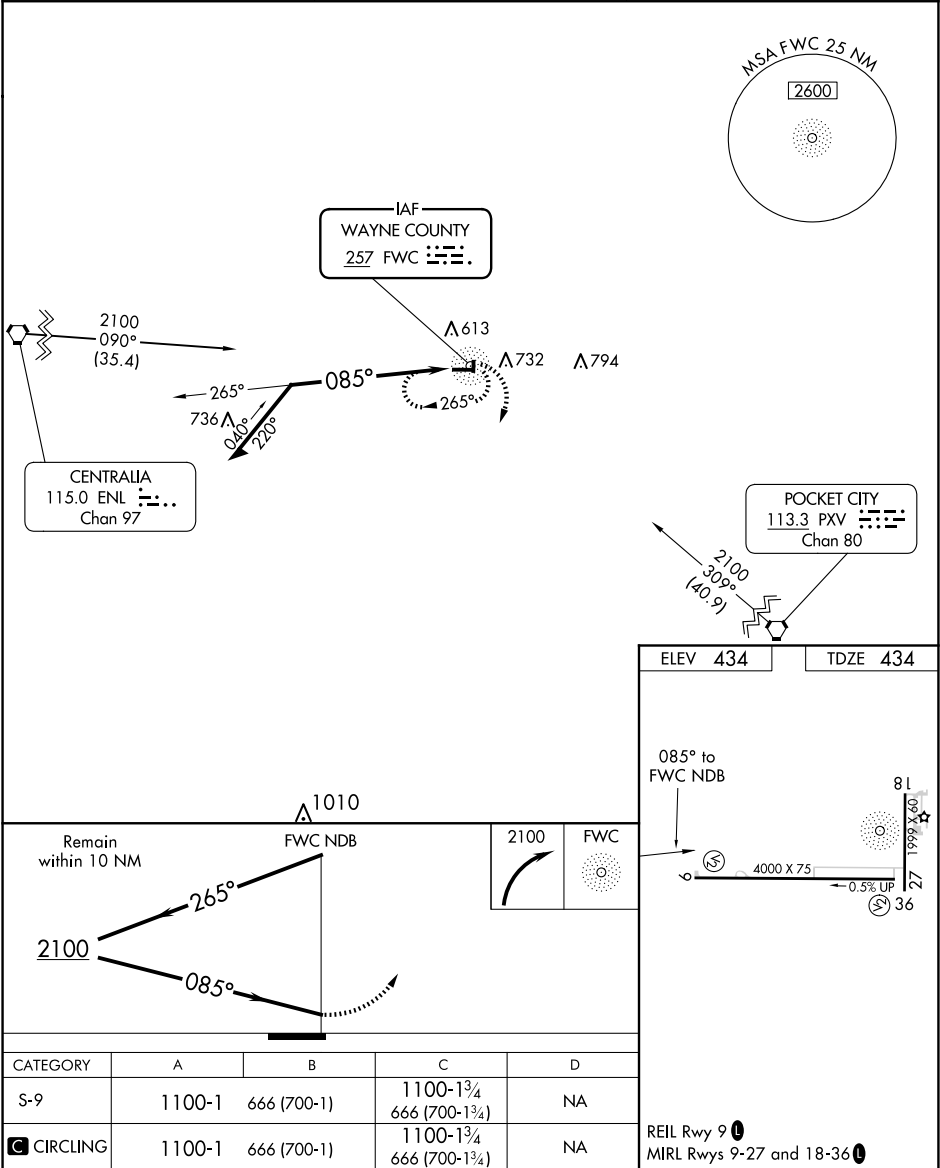


NDB FWC 257	APP CRS 085°	Rwy Idg 4000 TDZE 434 Apt Elev 434
-----------------------	------------------------	---

NDB RWY 9
FAIRFIELD MUNI (FWC)

ADF required.	MISSED APPROACH: Climbing right turn to 2100 in FWC NDB holding pattern.
Rwy 9 helicopter visibility reduction below 1 SM NA. Straight-in Rwy 9 NA at night, Circling Rwy 9, 27, 36 NA at night.	

AWOS-3PT 119.425	KANSAS CITY CENTER 127.7 351.825	UNICOM 123.05 (CTAF)
----------------------------	--	--------------------------------



EC-3, 07 AUG 2025 to 04 SEP 2025

EC-3, 07 AUG 2025 to 04 SEP 2025