

VENICE, FLORIDA

AL-5960 (FAA)

24361

WAAS CH 69234 W05A	APP CRS 050°	Rwy Idg 5000 TDZE 17 Apt Elev 18
--	------------------------	---

RNAV (GPS) RWY 5

VENICE MUNI (VNC)

T When local altimeter setting not received, use Sarasota altimeter setting and increase all MDA 60 feet, increase LNAV Cat C, D visibility $\frac{1}{8}$ mile, and Circling Cat C visibility $\frac{1}{4}$ mile. DME/DME RNP-0.3 NA. Helicopter visibility reduction below $\frac{3}{4}$ SM NA.

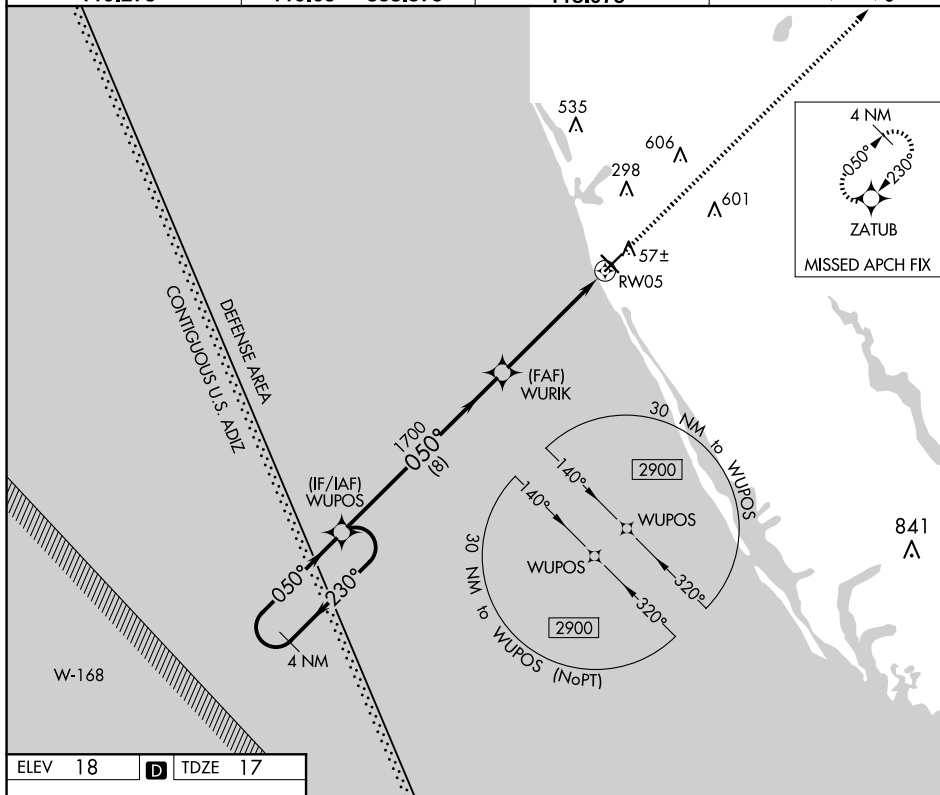
MISSED APPROACH:
Climb to 2900 direct
ZATUB and hold.

AWOS-3
119.275

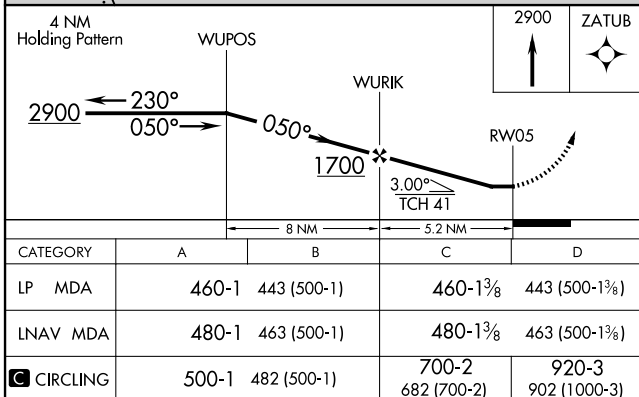
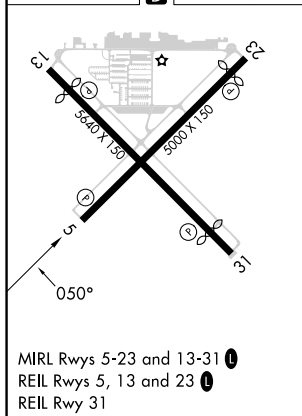
TAMPA APP CON
119.65 353.575

CLNC DEL
118.075

UNICOM
122.725 (CTAF) **L**



ELEV	18	D	TDZE	17
------	----	----------	------	----



VENICE, FLORIDA
Orig-C 05FEB15

27°04'N-82°26'W

VENICE MUNI (VNC)
RNAV (GPS) RWY 5

SE-3, 07 AUG 2025 to 04 SEP 2025

SE-3, 07 AUG 2025 to 04 SEP 2025