

VENICE, FLORIDA

AL-5960 (FAA)

24361

WAAS CH <b>86423</b> <b>W13A</b>	APP CRS <b>140°</b>	Rwy Idg <b>5000</b> TDZE <b>17</b> Apt Elev <b>18</b>
--	------------------------	---

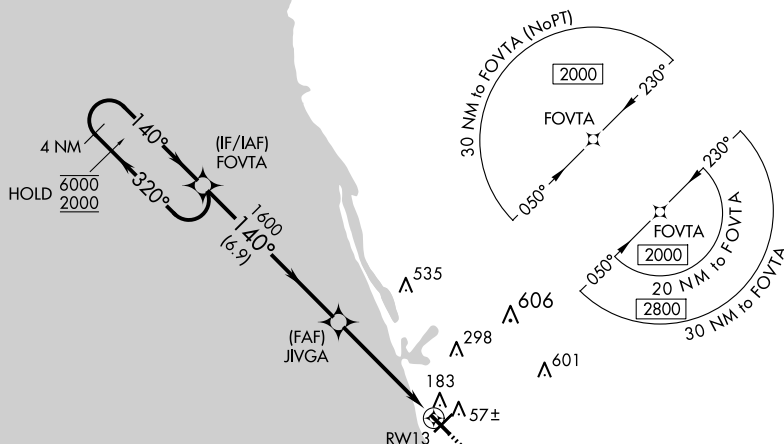
**RNAV (GPS) RWY 13**  
VENICE MUNI (VNC)

RNP APCH - GPS.

<b>T</b>	Rwy 13 helicopter visibility reduction below $\frac{3}{4}$ SM NA.
<b>A</b>	For uncompensated Baro-VNAV systems, LNAV/VNAV NA below -15°C or above 54°C.

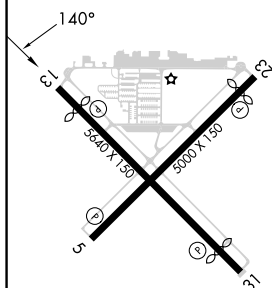
**MISSED APPROACH:** Climb to 2000 direct LEYIC and hold.

AWOS-3 <b>119.275</b>	TAMPA APP CON <b>119.65 353.575</b>	CLNC DEL <b>118.075</b>	UNICOM <b>122.725</b> (CTAF) <b>0</b>
--------------------------	--	----------------------------	--

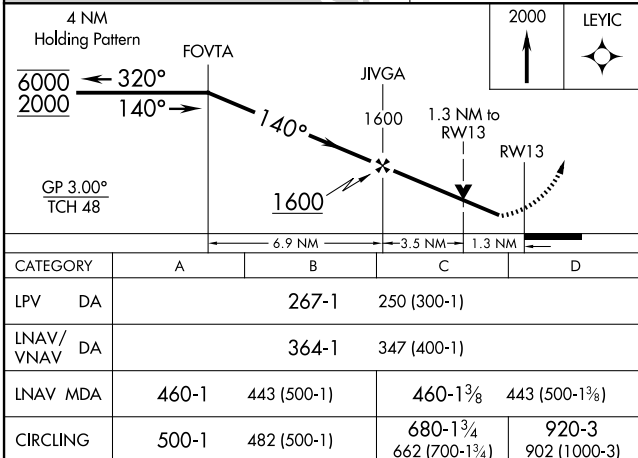


MISSED APCH FIX

ELEV 18	<b>D</b>	TDZE 17
---------	----------	---------



MIRL Rwy 5-23 and 13-31 **L**  
REIL Rwy 5, 13 and 23 **L**  
REIL Rwy 31



VENICE, FLORIDA  
Amdt 2A 05OCT23

27°04'N-82°26'W

VENICE MUNI (VNC)  
RNAV (GPS) RWY 13

SE-3, 07 AUG 2025 to 04 SEP 2025

SE-3, 07 AUG 2025 to 04 SEP 2025