

WAAS CH <b>90505</b> <b>W04A</b>	APP CRS <b>037°</b>	Rwy Ldg TDZE Apt Elev	<b>5500</b> <b>904</b> <b>904</b>
--	------------------------	-----------------------------	---

RNAV (GPS) RWY 4

BOLTON FLD (TZR)

RNP APCH.

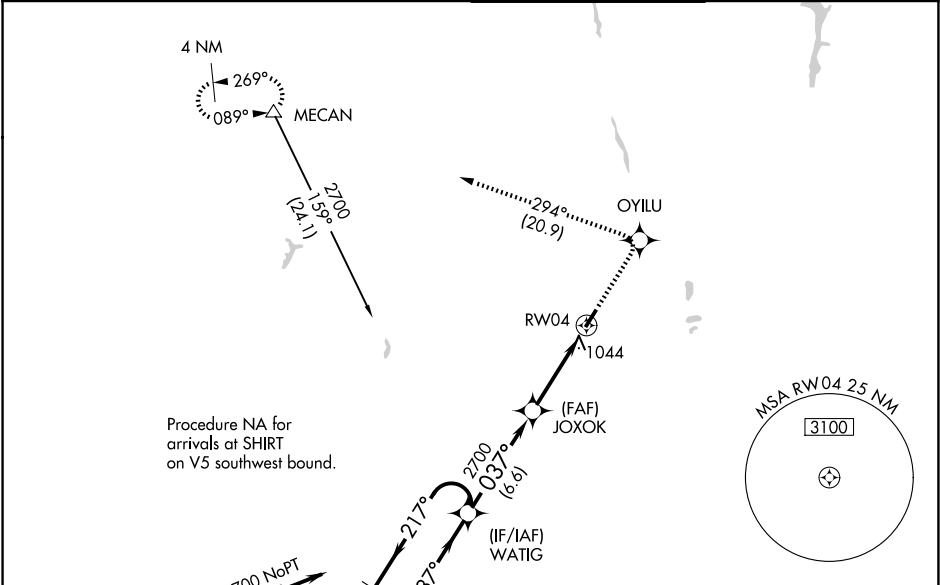
T

For uncompensated Baro-VNAV systems, LNAV/VNAV NA below -16°C or above 54°C. For inop ALS, increase LNAV/VNAV all Cats visibility to 1¼ SM and LNAV Cats C/D visibility to 1½ SM.

MALSR

MISSED APPROACH:  
Climb to 3000 direct OYILU and left turn on track 294° to MECAN and hold.

AWOS-3PT <b>135.925</b>	COLUMBUS APP CON <b>134.0 279.6</b>	BOLTON TOWER★ <b>128.1 (CTAF) 0</b>	GND CON <b>121.8</b>
----------------------------	--	--	-------------------------



4 NM Holding Pattern

VGSI and RNAV glidepath not coincident (VGSI Angle 3.00/TCH 25).

3000

OYILU

MECAN

↑

tr 294°

△

\*LNAV only.

WATIG

JOXOK

6000

2700

←217°

037°→

037°

2700

\*1.4 NM to RW04

RW04

GP 3.00° TCH 39

6.6 NM

4 NM

1.4

CATEGORY	A	B	C	D
LPV DA	1163-½ 259 (300-½)			
LNAV/VNAV DA	1325-1 421 (500-1)			
LNAV MDA	1360-½ 456 (500-½)	1360-⅞ 456 (500-⅞)		1360-1 456 (500-1)
CIRCLING	1360-1 456 (500-1)	1380-1 476 (500-1)	1380-1½ 476 (500-1½)	1500-2 596 (600-2)

ELEV 904

TDZE 904

TWR★

REIL Rwy 22 0

MIRL Rwy 4-22 0

25

25

3000

5500 x 100

037°