

25107

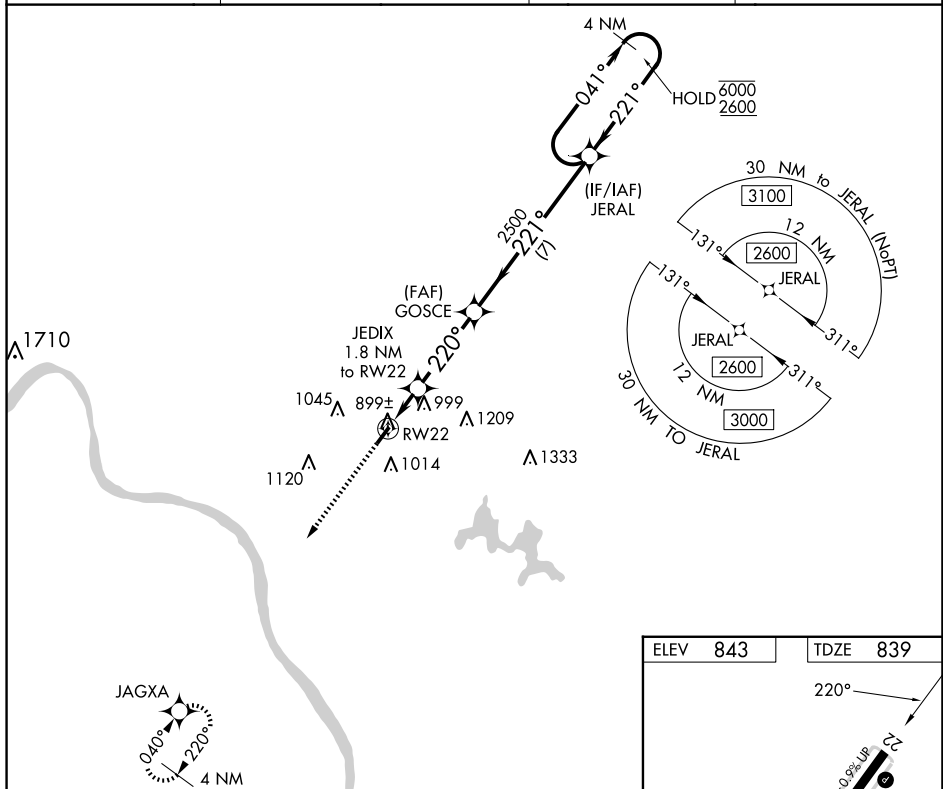
RNAV (GPS) RWY 22

CLERMONT COUNTY (I69)

T	Circling Rwy 4 NA at night.
A	Rwy 22 helicopter visibility reduction below 1 SM NA.

MISSED APPROACH: Climb to 2500 direct JAGXA and hold.

AWOS-3 127.275	CINCINNATI APP CON 121.0 254.25	CLNC DEL 124.9	UNICOM 122.975 (CTAF) 0
--------------------------	---	--------------------------	-----------------------------------



Visual Segment - Obstacles.

Obstacles and Distances:

- JEDIX: 1.8 NM to RW22, 1420 MSL
- GOSCE: 2500 MSL
- JERAL: 6000 MSL (6000/2600)

Segment Distances:

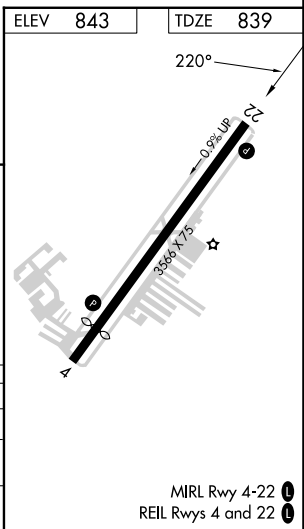
- Segment A: 1.8 NM
- Segment B: 3.4 NM
- Segment C: 7 NM

Angles:

- 220° between JEDIX and GOSCE
- 221° between GOSCE and JERAL
- 041° heading for Holding Pattern

4 NM Holding Pattern

CATEGORY	A	B	C	D
LP MDA	1160-1 321 (400-1)			NA
LNAV MDA	1240-1	401 (400-1)	1240-1½ 401 (400-1½)	NA
C CIRCLING	1320-1 477 (500-1)	1360-1 517 (600-1)	1520-2 677 (700-2)	NA

CLERMONT COUNTY (I69)
RNAV (GPS) RWY 22

EC-2, 07 AUG 2025 to 04 SEP 2025