

WAAS CH 40318 W35A	APP CRS 354°	Rwy Idg TDZE 648 Apt Elev 657
--	------------------------	---

RNAV (GPS) RWY 35

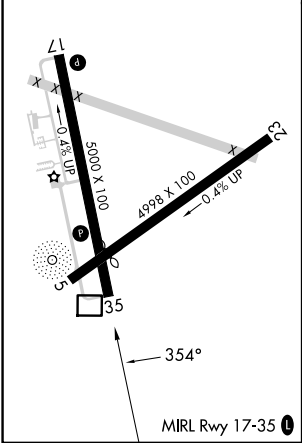
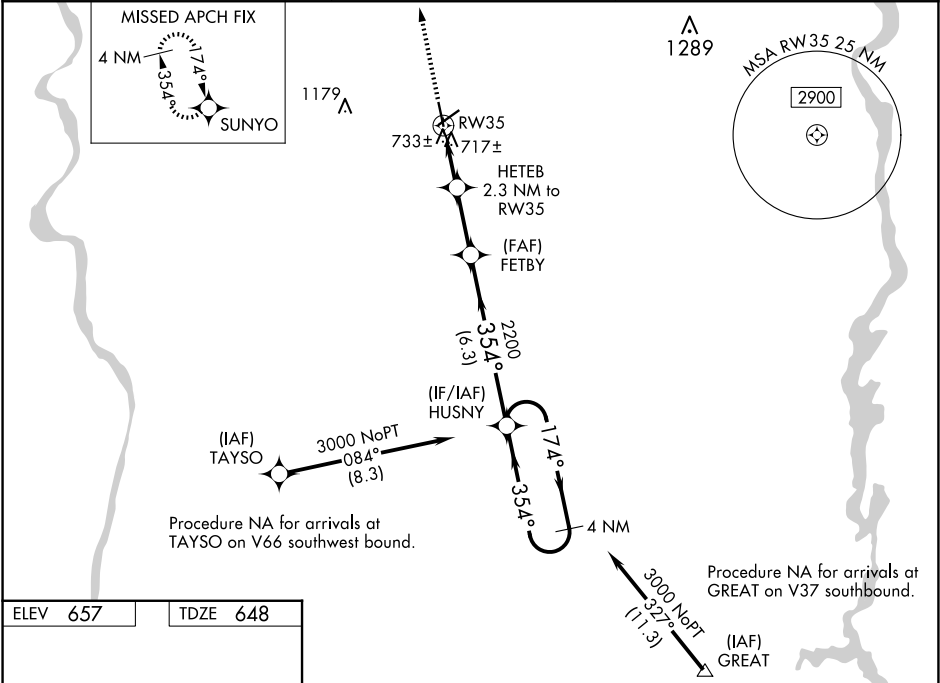
CHESTER CATAWBA RGNL (DCM)




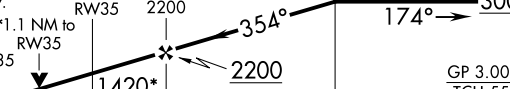

⚠

Circling to Rwy 5-23 NA at night. For uncompensated Baro-VNAV systems, LNAV/VNAV NA below -16°C (4°F) or above 47°C (116°F). DME/DME RNP-0.3 NA. Visibility reduction by helicopters NA. When local altimeter setting not received, use Rock Hill altimeter setting and increase all DA 33 feet and all MDAs 40 feet; increase LPV, LNAV/VNAV all Cats and LNAV Cat C visibility ¼ mile. Baro-VNAV and VDP NA when using Rock Hill altimeter setting.

MISSED APPROACH:
Climb to 3000 direct SUNYO and hold.

AWOS-3 120.975	CHARLOTTE APP CON 120.05 307.8	UNICOM 122.7 (CTAF) 0
--------------------------	--	---------------------------------



3000	SUNYO	VGSI and RNAV glidepath not coincident (VGSI Angle 3.00/TCH 32).		HUSNY	4 NM Holding Pattern
		HETEB 2.3 NM to RW35	FETBY 2200	354°	3000
*LNAV only.				174°	GP 3.00° TCH 55
		1.1 NM to RW35	1420*	2200	
CATEGORY	A	B	C	D	
LPV DA	940-1 292 (300-1)				
LNAV/ VNAV DA	1010-1¼ 362 (400-1¼)				
LNAV MDA	1020-1 372 (400-1)				1020-1¼ 372 (400-1¼)
CIRCLING	1160-1 503 (600-1)		1280-1¾ 623 (700-1¾)	1480-2¾ 823 (900-2¾)	