

WAAS CH 93818 W17A	APP CRS 174°	Rwy Idg TDZE 657 Apt Elev 657
--	------------------------	---

RNAV (GPS) RWY 17

CHESTER CATAWBA RGNL (DCM)

RNP APCH-GPS.

▼

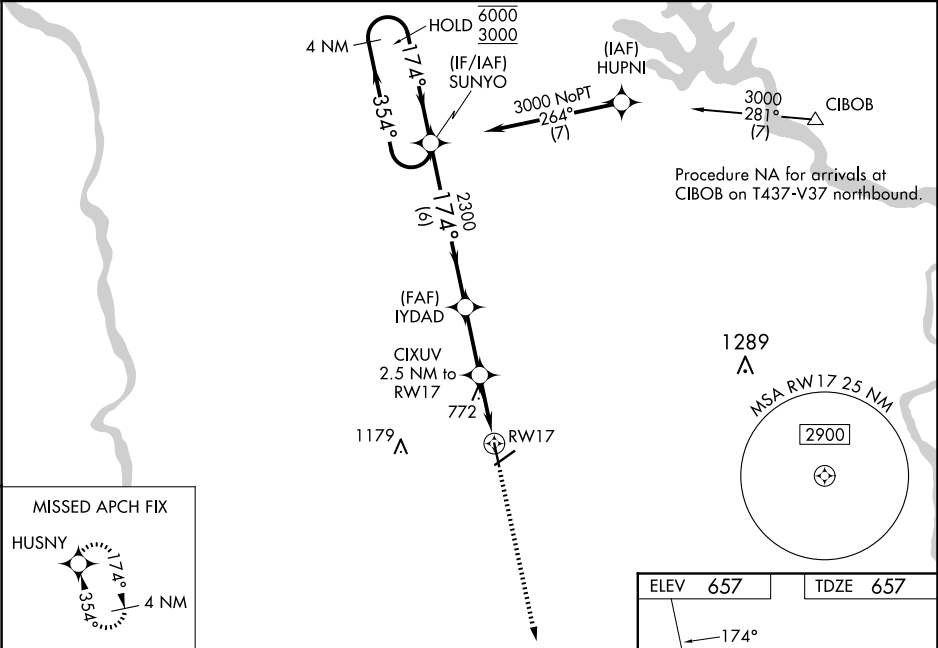
For uncompensated Baro-VNAV systems, LNAV/VNAV NA below -16°C or above 54°C.

⚠

Circling to Rwy 5-23 NA at night. Rwy 17 helicopter visibility reduction below ¾ SM NA. Baro-VNAV and VDP NA when using UZA altimeter setting. When local altimeter setting not received, use UZA altimeter setting and increase LPV DA to 940 feet and all visibilities ½ SM. Increase LNAV/VNAV DA to 1167 feet; increase all MDAs 40 feet and LNAV visibility Cat C/D ¼ SM.

MISSED APPROACH:
Climb to 3000 direct HUSNY and hold.

AWOS-3 120.975	CHARLOTTE APP CON 120.05 307.8	UNICOM 122.7 (CTAF) 0
--------------------------	--	---------------------------------



4 NM Holding Pattern		SUNYO		VGSI and RNAV glidepath not coincident (VGSI Angle 3.00/TCH 26).		3000		HUSNY	
6000 3000		←354° 174°→		174°		2300		CIXUV 2.5 NM to RW17	
GP 3.04° TCH 34				2300		1480		1.2 NM to RW17	
		6 NM		2.5 NM		1.3 NM		1.2	
CATEGORY	A	B	C	D					
LPV DA	907-¾ 250 (300-¾)								
LNAV/VNAV DA	1134-1⅜ 477 (500-1⅜)								
LNAV MDA	1060-1	403 (500-1)	1060-1⅝	403 (500-1⅝)					
CIRCLING	1160-1	503 (600-1)	1280-1¾ 623 (700-1¾)	1480-2¾ 823 (900-2¾)					

