

APP CRS  
**049°**

Rwy Idg  
TDZE **146**  
Apt Elev **146**

**RNAV (GPS) RWY 5**  
WINTER HAVEN RGNL (GIF')

RNP APCH-GPS.

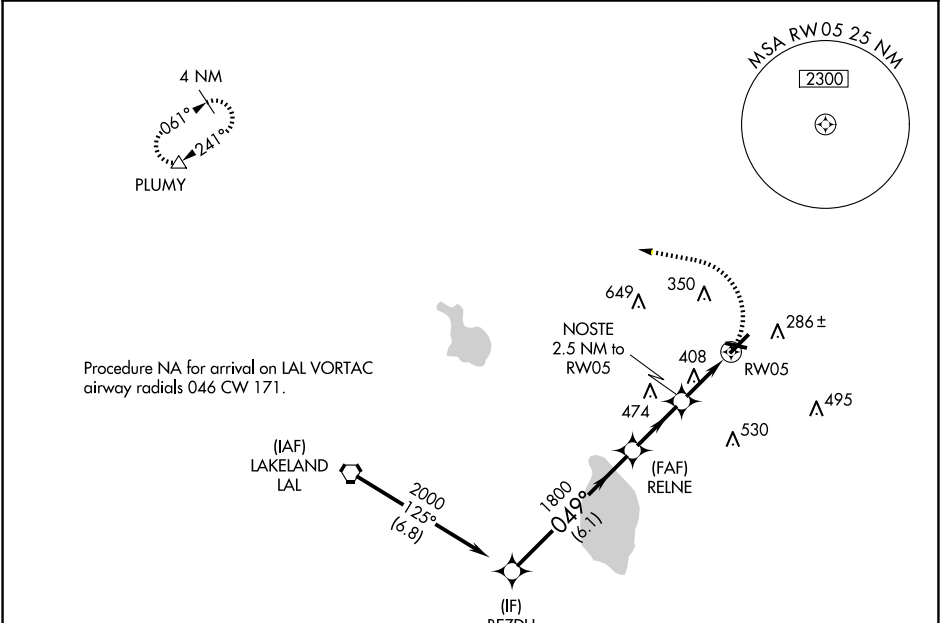
▼

⚠

Rwy 5 helicopter visibility reduction below 1 SM NA. When local altimeter setting not received, use Bartow altimeter setting and increase all MDAs 20 feet and visibility LNAV Cats C and D ½ SM. Straight-in Rwy 5 NA at night, Circling Rwy 5, 11, 29 NA at night.

MISSED APPROACH: Climbing left turn to 2000 direct PLUMY and hold.

ASOS <b>133.675</b>	TAMPA APP CON <b>120.65 290.3</b>	CLNC DEL (GCO) <b>121.725</b>	UNICOM <b>123.05 (CTAF) 0</b>
------------------------	--------------------------------------	----------------------------------	----------------------------------



ELEV 146

TDZE 146

BEZDU

RELNE

NOSTE

PLUMY

2000

1800

980

2000

049°

3.04°

2.5 NM to RWY 05

2.5 NM

2.5 NM

6.1 NM

2.5 NM

2.5 NM

VGSI and descent angles not coincident (VGSI Angle 3.00/TCH 45).

△

CATEGORY	A	B	C	D
LNAV MDA	660-1	514 (600-1)	660-1¾	514 (600-1¾)
CIRCLING	720-1	574 (600-1)	820-2 674 (700-2)	960-2¾ 814 (900-2¾)

REIL Rwy 5 and 23

REIL Rwy 11 and 29 0

MIRL Rwy 5-23 and 11-29 0