

WAAS
CH **86502**
W11A

APP CRS
107°

Rwy Idg
TDZE **145**
Apt Elev **146**

4001
145
146

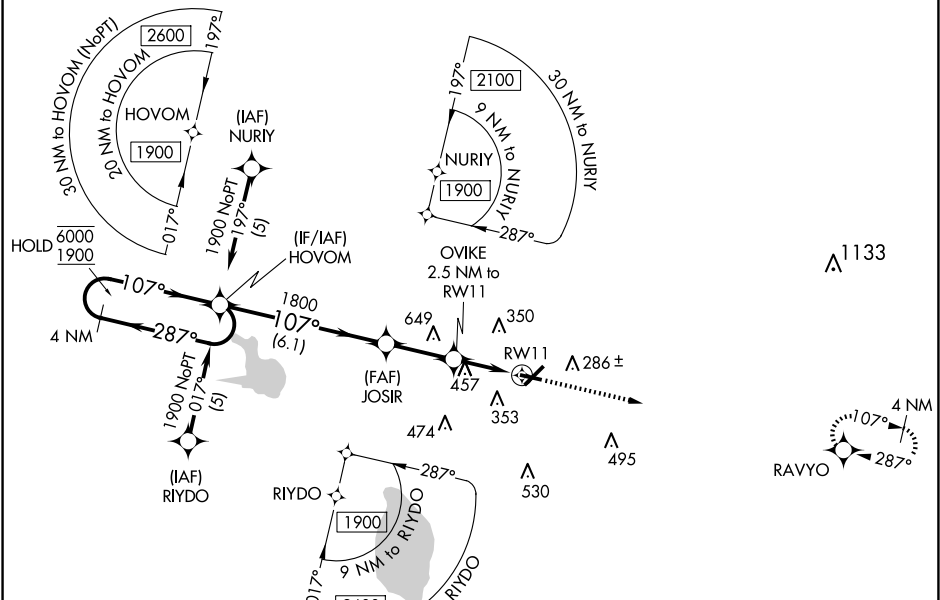
RNAV (GPS) RWY 11
WINTER HAVEN RGNL (GIF')

RNP APCH-GPS.

▼ Rwy 11 helicopter visibility reduction below 1 SM NA. Baro-VNAV NA when using Bartow altimeter setting. For uncompensated Baro-VNAV systems, LNAV/VNAV NA below 3°C or above 54°C. When local altimeter setting not received, use Bartow altimeter setting and increase LPV DA to 415 feet; increase LNAV/VNAV DA to 667 feet and all visibilities $\frac{1}{2}$ SM; increase all MDAs 20 feet. Straight-in Rwy 11 NA at night, Circling Rwy 5, 11, 29 NA at night.

MISSED APPROACH:
Climb to 2600 direct RAVYO and hold.

ASOS 133.675	TAMPA APP CON 120.65 290.3	CLNC DEL (GCO) 121.725	UNICOM 123.05 (CTAF) 0
------------------------	--------------------------------------	----------------------------------	----------------------------------



<div>2600</div> <div>30 NM to</div>					<div>ELEV 146</div>	<div>TDZE 145</div>
<div>4 NM Holding Pattern</div> <div>HOVOM</div> <div>JOSIR</div> <div>OVIKE 2.5 NM to RW11</div> <div>RW11</div> <div>6.1 NM</div> <div>2.5 NM</div> <div>2.5 NM</div>					<div>2600</div> <div>RAVYO</div>	
<div>6000</div> <div>1900</div> <div>287°</div> <div>107°</div> <div>107°</div> <div>1800</div> <div>980</div> <div>GP 3.00°</div> <div>TCH 45</div>						
CATEGORY	A	B	C	D		
LPV DA	395-1 250 (300-1)					
LNAV/VNAV DA	647-1 $\frac{3}{8}$ 502 (600-1 $\frac{3}{8}$)					
LNAV MDA	760-1	615 (700-1)	760-1 $\frac{3}{4}$	615 (700-1 $\frac{3}{4}$)		
CIRCLING	760-1	614 (700-1)	820-2	960-2 $\frac{3}{4}$		
			674 (700-2)	814 (900-2 $\frac{3}{4}$)		

REIL Rwys 5 and 23

REIL Rwys 11 and 29 0

MIRL Rwy 5-23 and 11-29 0