

WAAS CH <b>70536</b> <b>W25A</b>	APP CRS <b>255°</b>	Rwy Idg <b>4001</b> TDZE <b>1065</b> Apt Elev <b>1067</b>
--	------------------------	---

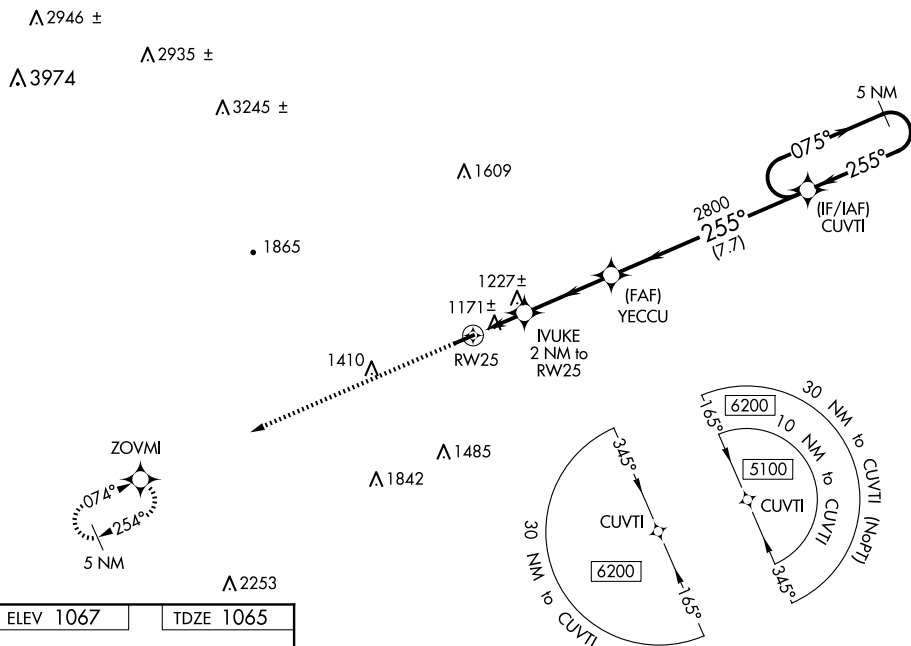
## RNAV (GPS) RWY 25

ELKIN MUNI (ZEF)

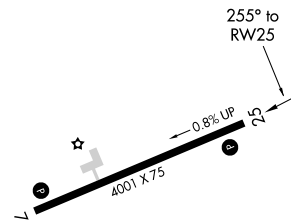
- T** Obtain local altimeter setting on CTAF; when not received, use Mount Airy altimeter setting and increase MDA 80 ft and LP and Circling Cats C/D visibility ¼ mile. DME/DME RNP-0.3 NA. Procedure NA at night. Helicopter visibility reduction below 1 SM NA.

**MISSED APPROACH:** Climb to 4900 direct ZOVM and hold, continue climb-in-hold to 4900.

ATLANTA CENTER	UNICOM
125.15 263.0	123.05 (CTAF) 0



ELEV 1067		TDZE 1065
-----------	--	-----------



MIRL Rwy 7-25 **L**  
REIL Rwy 7 and Rwy 25 **L**

Visual Segment - Obstacles.

4900 ZOVMI

RW25

1720

YECCU 2800

CUVTI 5100

5 NM Holding Pattern

075° 255°

2 NM 3.4 NM 7.7 NM

CATEGORY	A	B	C	D
LP MDA	1440-1 375 (400-1)		1440-1 $\frac{1}{8}$ 375 (400-1 $\frac{1}{8}$ )	
LNAV MDA	1480-1 415 (500-1)		1480-1 $\frac{3}{8}$ 415 (500-1 $\frac{3}{8}$ )	
C CIRCLING	1540-1 473 (500-1)	1600-1 533 (600-1)	1680-1 $\frac{3}{4}$ 613 (700-1 $\frac{1}{4}$ )	1840-2 $\frac{1}{2}$ 773 (800-2 $\frac{1}{2}$ )