

| | | | |
|--|------------------------|---|---|
| WAAS CH 70724 W23A | APP CRS 230° | Rwy Idg TDZE 464 Apt Elev 468 | 6011 464 468 |
|--|------------------------|---|---|

RNAV (GPS) RWY 23
JIMMY CARTER RGNL (ACJ)

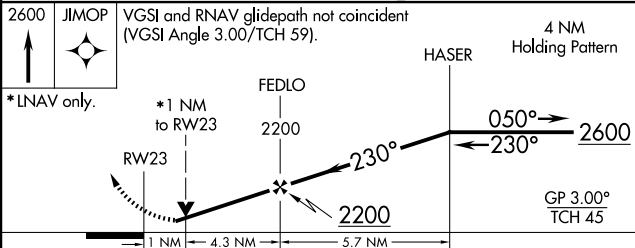
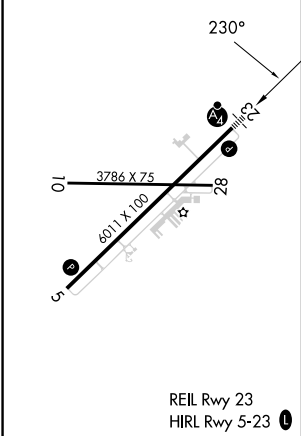
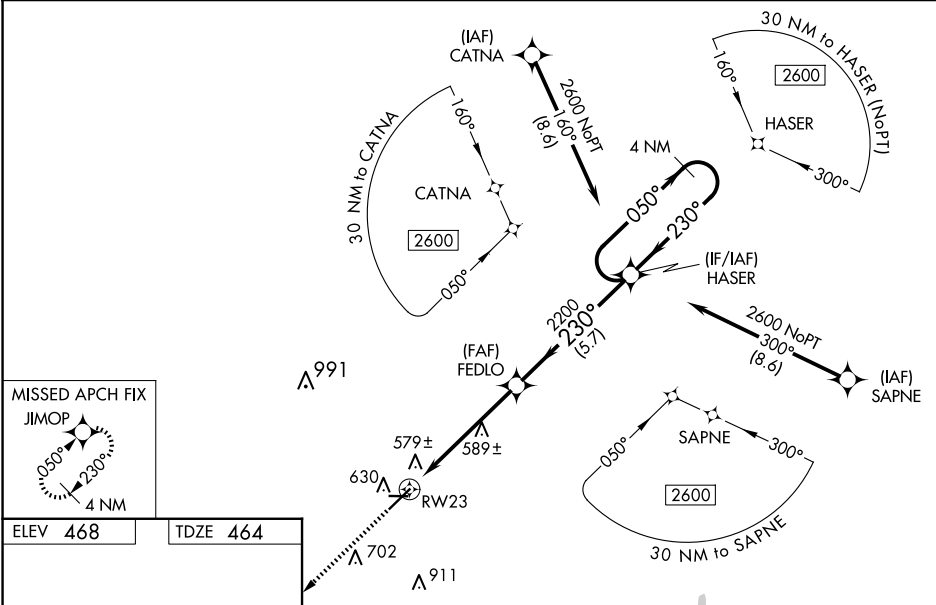
RNP APCH-GPS.

NA Baro-VNAV NA and VDP NA when using Columbus altimeter setting. For uncompensated Baro-VNAV systems, LNAV/VNAV NA below -15°C or above 41°C. For inop ALS when using Columbus altimeter setting, increase LPV and LNAV/VNAV all Cats visibility to 1 ½ SM. Rwy 23 helicopter visibility reduction below ¾ SM NA. When local altimeter setting not received, use Columbus altimeter setting and increase LPV DA to 876 feet and all visibilities ¼ SM; increase LNAV/VNAV DA to 881 feet and all visibilities ¼ SM; increase all MDAs 120 feet and LNAV visibility Cats C/D ½ SM, and Circling visibility Cat C ½ SM and Cat D ¼ SM. For inop ALS, increase LPV and LNAV/VNAV all Cats visibility to ¾ SM. Circling Rwy 10, 28 NA at night.

MAISF

MISSED APPROACH:
Climb to 2600 direct JIMOP and hold.

| | | | |
|--------------------------|---|---------------------------|---------------------------------|
| AWOS-3 128.375 | ATLANTA APP CON ★ 124.2 323.1 | CLNC DEL 119.95 | UNICOM 122.8 (CTAF) 0 |
|--------------------------|---|---------------------------|---------------------------------|



| CATEGORY | A | B | C | D |
|--------------|-------|-------------|-------------------------|-------------------------|
| LPV DA | 760-¾ | 296 (300-¾) | | |
| LNAV/VNAV DA | 765-¾ | 301 (300-¾) | | |
| LNAV MDA | 840-¾ | 376 (400-¾) | 840-¾ | 376 (400-¾) |
| CIRCLING | 940-1 | 472 (500-1) | 1020-1½ 552 (600-1½) | 1280-2¾ 812 (900-2¾) |