
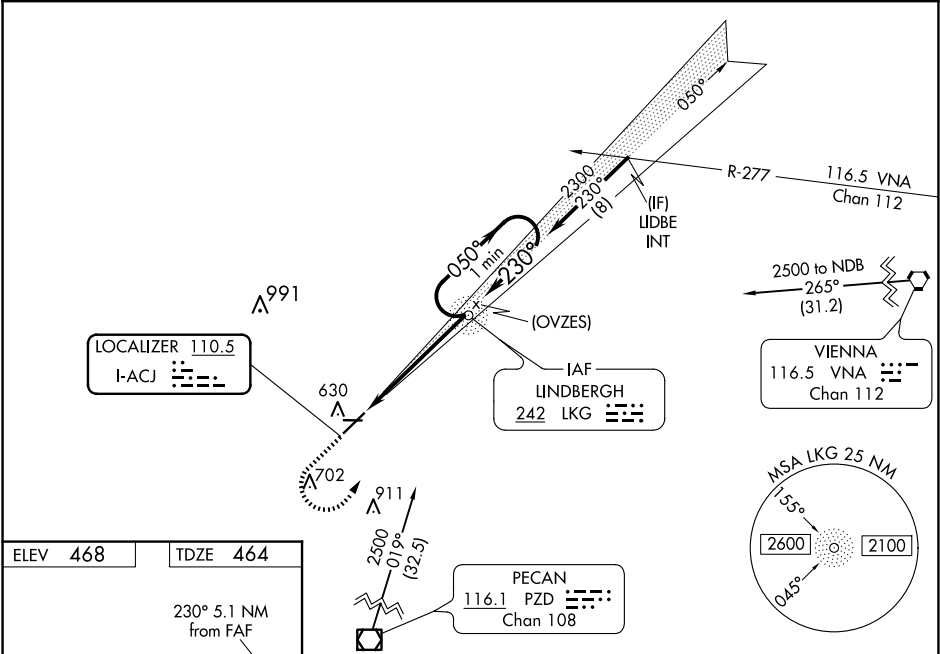





LOC I-ACJ	APP CRS	Rwy Idg	6011
110.5	230°	TDZE	464
		Apt Elev	468

ILS or LOC RWY 23
JIMMY CARTER RGNL (ACJ)

ADF required.			<div><div>MALSF</div><div></div></div>	<div>MISSED APPROACH: Climb to 1100 then climbing left turn to 2500 direct LKG NDB and hold.</div>
<div><div><div><div><div><div></div></div></div><div><div></div></div></div><div>NA</div></div><div>Rwy 23 helicopter visibility reduction below ¾ SM NA. When local altimeter setting not received, use Columbus altimeter setting and increase S-ILS 23 DA to 889 and all MDA 120 feet, increase S-ILS 23 all Cats visibility and S-LOC 23 Cat C/D visibility ¼ SM, increase Circling Cat C visibility ½ SM, and Circling Cat D visibility ¼ SM. For inop ALS when using Columbus altimeter setting increase S-LOC 23 Cat C/D visibility to 1¾ SM. Circling Rwy 10, 28 NA at night. For inop ALS, increase S-ILS 23 all Cats visibility to ¾ SM.</div></div>				
<div>AWOS-3</div> <div>128.375</div>	<div>ATLANTA APP CON ★</div> <div>124.2 323.1</div>	<div>CLNC DEL</div> <div>119.95</div>	<div>UNICOM</div> <div>122.8 (CTAF) 0</div>	



ELEV 468	TDZE 464
230° 5.1 NM from FAF	
3786 X 75	
6011 X 100	
REIL Rwy 23	
HIRL Rwy 5-23	
FAF to MAP 5.1 NM	
Knots	60 90 120 150 180
Min:Sec	5:06 3:24 2:33 2:02 1:42

1100	2500	LKG
		
VGSi and ILS glidepath not coincident (VGSi Angle 3.00/TCH 59).		

SE-4, 07 AUG 2025 to 04 SEP 2025

SE-4, 07 AUG 2025 to 04 SEP 2025