

WAAS CH 56607 W34A	APP CRS 338°	Rwy Idg 5001 TDZE 1069 Apt Elev 1069
--	------------------------	---

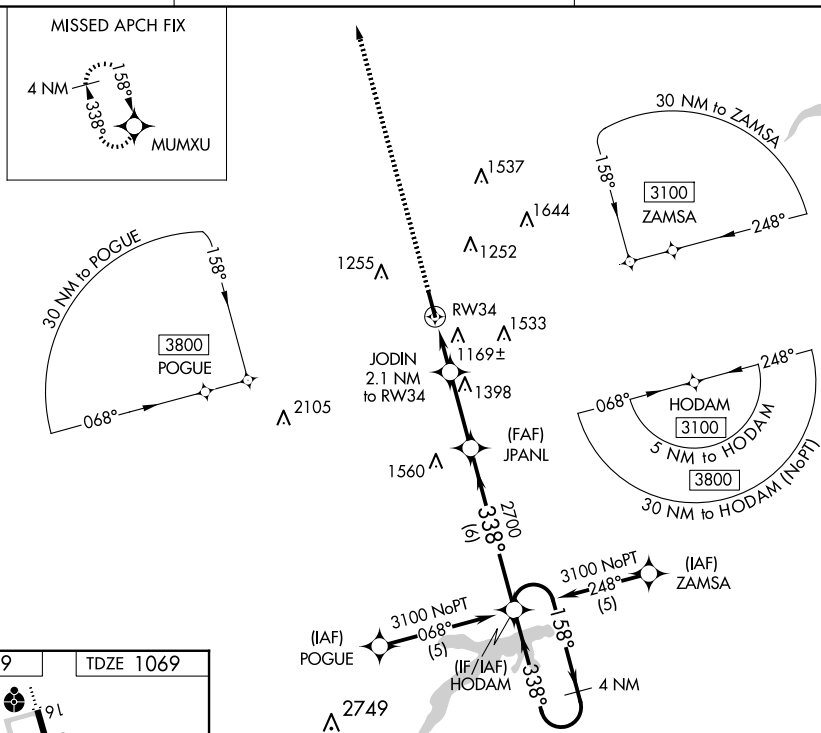
RNAV (GPS) RWY 34

GUTHRIE/EDMOND RGNL (GOK)

- T** DME/DME RNP-0.3 NA. VDP NA when using OKC Will Rogers Intl altimeter setting.
A When local altimeter setting not received, use OKC Will Rogers Intl altimeter setting and increase DA/MDA 100 feet and LPV all Cats visibility $\frac{1}{4}$ mile.

MISSED APPROACH: Climb to 3100 direct MUMXU and hold

ASOS 133.975	OKE CITY APP CON 124.2 336.4	UNICOM 122.8 (CTAF) 0
------------------------	--	---------------------------------



*RNAV only.

JODIN 2.1 NM to RW34

JPANL 1.1 NM to RW34

HODAM 4 NM Holding Pattern

1760*

2700

GP 3.00° TCH 45°

CATEGORY	A	B	C	D
LPV DA	1319-1	250 (300-1)		NA
LNAV MDA	1420-1	351 (400-1)		NA
CIRCLING	1540-1 471 (500-1)	1560-1 491 (500-1)		NA