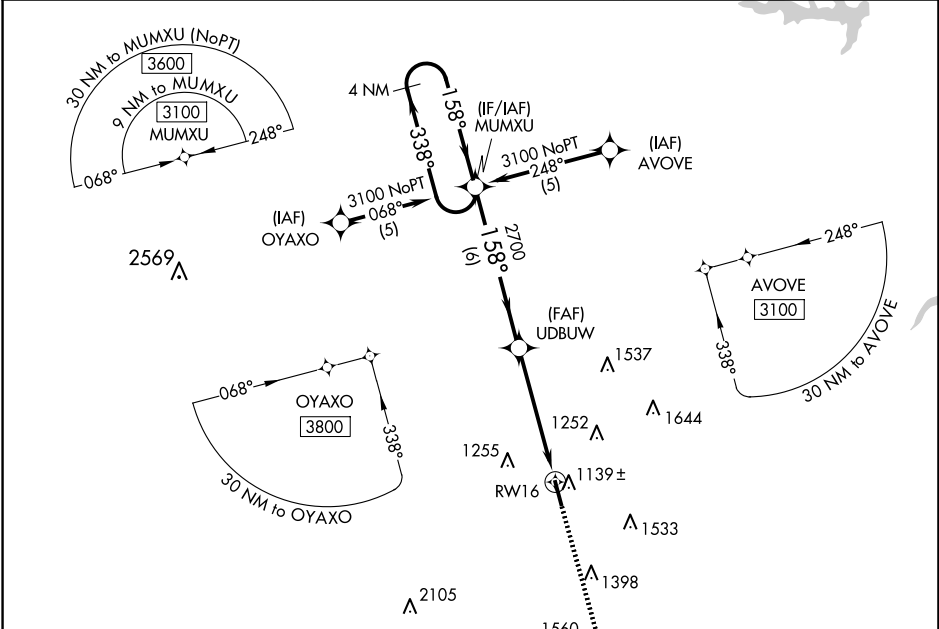


WAAS CH 56308 W16A	APP CRS 158°	Rwy Idg 5001 TDZE 1069 Apt Elev 1069
--	------------------------	---

RNAV (GPS) RWY 16
GUTHRIE/EDMOND RGNL (GOK)

⚠ DME/DME RNP-0.3 NA. VDP NA when using OKC Will Rogers Intl altimeter setting. When local altimeter setting not received, use OKC Will Rogers Intl altimeter setting and increase DA/MDA 100 feet and LPV all Cats visibility ¼ mile.	ODALS 	MISSED APPROACH: Climb to 3100 direct HODAM and hold.
---	-----------	---

ASOS 133.975	OKE CITY APP CON 124.2 336.4	UNICOM 122.8 (CTAF) 0
------------------------	--	--



ELEV 1069	TDZE 1069
-----------	-----------

