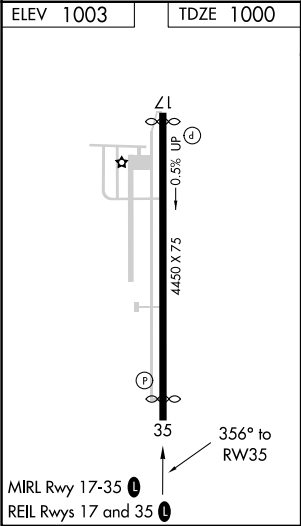
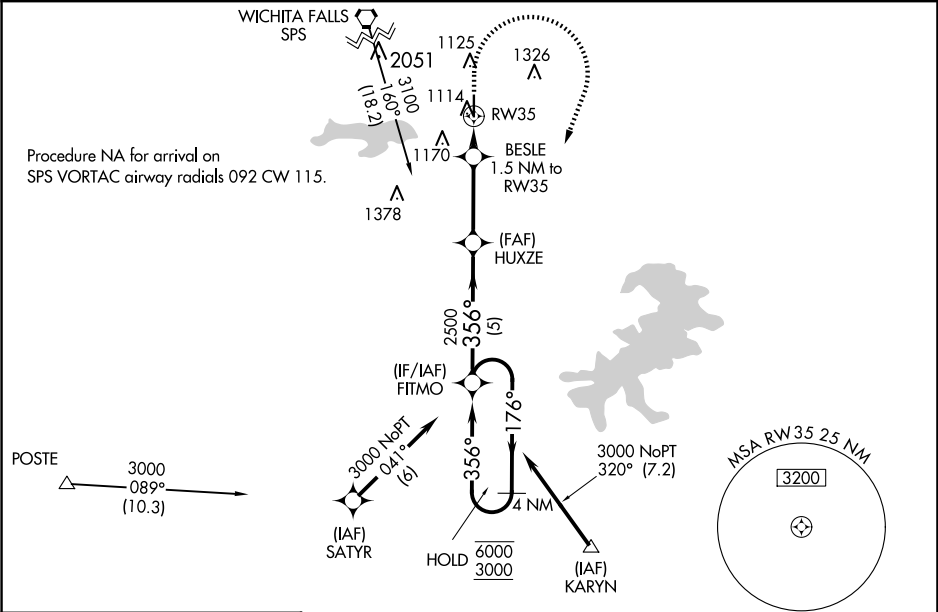


WAAS CH <b>90438</b> <b>W35A</b>	APP CRS <b>356°</b>	Rwy Idg <b>4200</b> TDZE <b>1000</b> Apt Elev <b>1003</b>
--	------------------------	---

RNAV (GPS) RWY 35

KICKAPOO DOWNTOWN (CWC)

RNP APCH.		MISSED APPROACH: Climb to 1500 then climbing right turn to 3000 direct FITMO and hold.	
<div>▼</div> <div>▲</div> Circling NA east of Rwy 17-35. Rwy 35 helicopter visibility reduction below ¼ SM NA. For uncompensated Baro-VNAV systems, LNAV/VNAV NA below -16°C or above 54°C.			
AWOS-3 119.625	SHEPPARD APP CON ★ 120.4 269.025	CLNC DEL 121.2	UNICOM 122.7 (CTAF) 0



1500 ↑	3000 ↗	FITMO 	4 NM Holding Pattern			
* LNAV only.			BESLE 1.5 NM to RW35	HUXZE 2500	FITMO 176° → ← 356°	6000 3000
			1500*	2500		GP 3.00° TCH 41
→ 1.5 NM			← 3.1 NM	← 5 NM		
CATEGORY	A		B		C	D
LNAV/ VNAV	DA	1284-1		284 (300-1)	NA	
LPV	DA	1299-7/8		299 (300-7/8)	NA	
LNAV	MDA	1380-1		380 (400-1)	NA	
CIRCLING		1440-1 437 (500-1)	1480-1 477 (500-1)	1720-2 717 (800-2)	NA	