

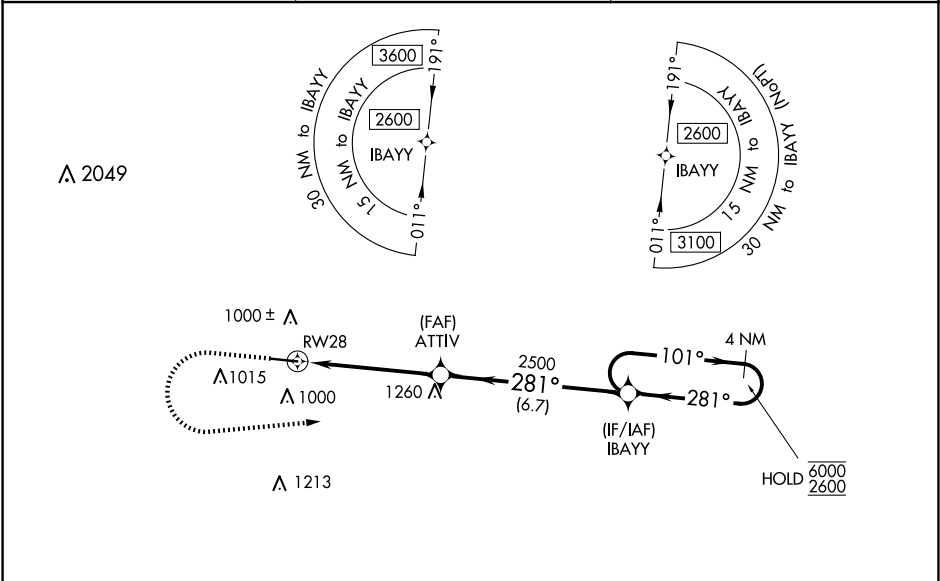
WAAS CH 72710 W28A	APP CRS 281°	Rwy Idg 5500 TDZE 810 Apt Elev 820
--	------------------------	---

RNAV (GPS) RWY 28

COVINGTON MUNI (CVC)

RNP APCH - GPS.	MALSR	MISSED APPROACH: Climb to 1300 then climbing left turn to 2600 direct IBAYY and hold.
<div><div>⚠</div><div>Circling Rwy 10 NA at night. Rwy 28 helicopter visibility reduction below ¾ SM NA. For uncompensated Baro-VNAV systems, LNAV/VNAV NA below -16°C or above 54°C. For inop ALS, increase LNAV Cat C/D visibility to 1½ SM.</div></div>		

AWOS-3 118.725	ATLANTA APP CON 128.575 343.675	UNICOM 123.0 (CTAF) 0
--------------------------	---	---------------------------------



ELEV 820	D	TDZE 810
----------	----------	----------

