

APP CRS	Rwy Ldg	3907
359°	TDZE	512
	Apt Elev	516

RNAV (GPS) RWY 36

COMMERCE MUNI (2F7)

RNP APCH.

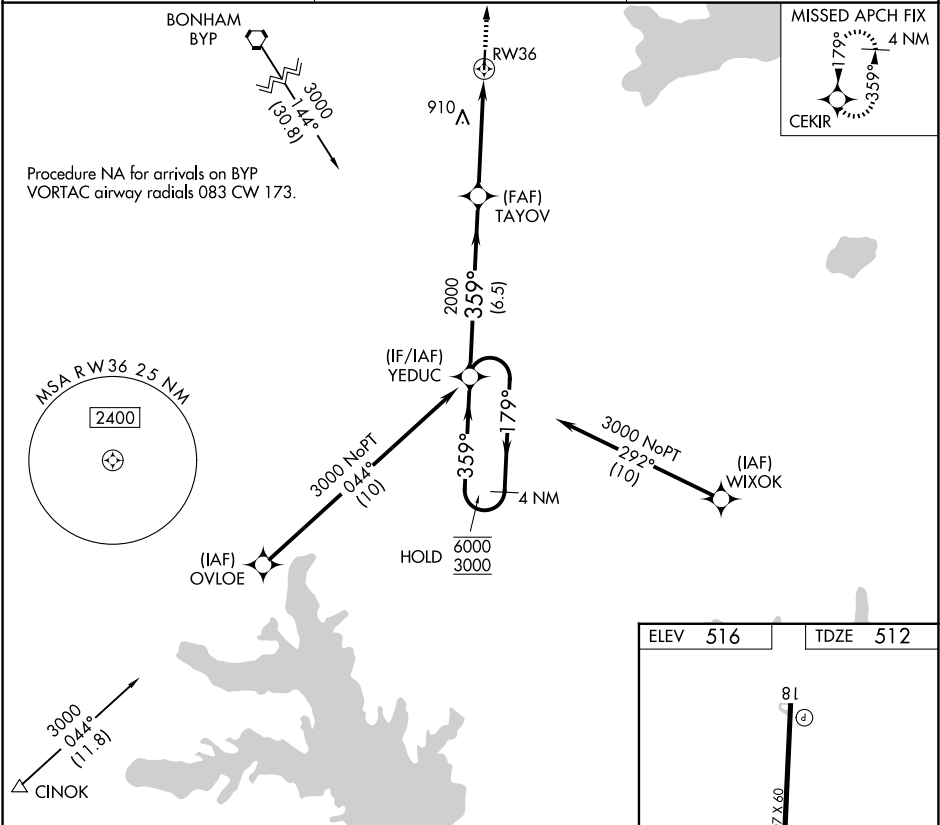
▼

▲ NA

Use Greenville altimeter setting, when not received, use Sulphur Springs altimeter setting and increase all MDAs 20 feet. Rwy 36 helicopter visibility reduction below ¾ SM NA.

MISSED APPROACH: Climb to 3000 direct CEKIR and hold.

GVT AWOS-3 133.425	FORT WORTH CENTER 132.025 317.75	CTAF 122.9
-----------------------	-------------------------------------	---------------



Visual Segment - Obstacles.				3000	CEKIR
4 NM Holding Pattern				3000	CEKIR
6000 3000				3000	CEKIR
179° 359°				3000	CEKIR
YEDUC				3000	CEKIR
TAYOV				3000	CEKIR
RW36				3000	CEKIR
6.5 NM 4.6 NM				3000	CEKIR
CATEGORY	A	B	C	D	
LNAV MDA	1140-1	628 (700-1)	NA	NA	

SC-2, 07 AUG 2025 to 04 SEP 2025

SC-2, 07 AUG 2025 to 04 SEP 2025