

MAYNR THREE DEPARTURE (RNAV)

**TOP ALTITUDE:
ASSIGNED BY ATC**



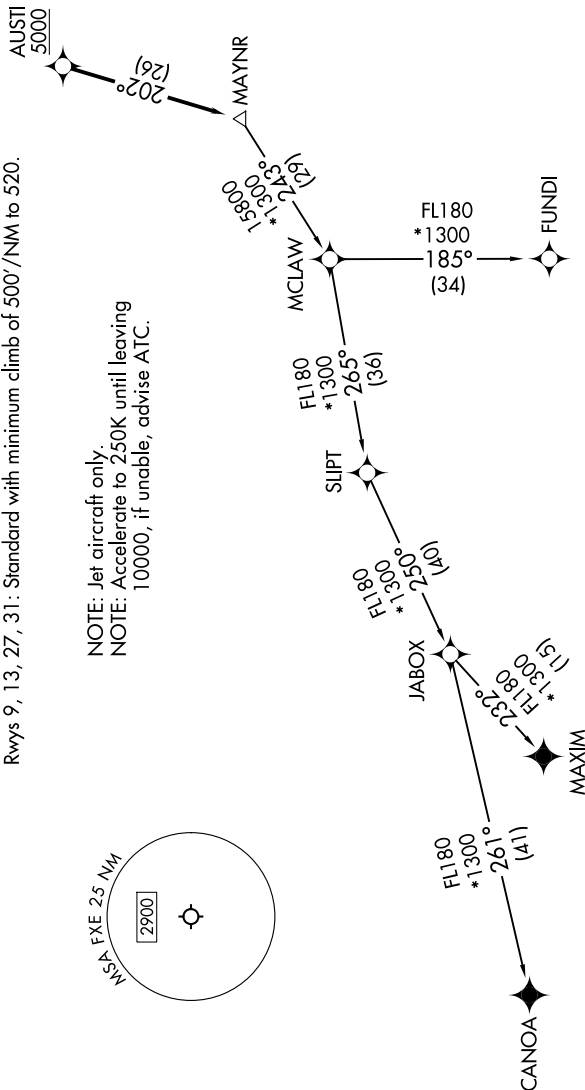
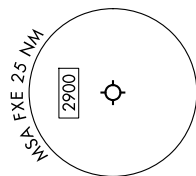
RNAV 1 - DME/DME/IRU or GPS.
From SLIPT to MAXIM: RNAV 1- GPS.
From SLIPT to CANOA: RNAV 1- GPS.

RADAR required for non-GPS equipped aircraft.
RADAR required.

MIAMI DEP CON
126.05 251.1
ATIS
119.85
CLINC DEL
127.95
GND CON
121.75
EXECUTIVE TOWER
120.9 239.3

TAKEOFF MINIMUMS
Rwys 9, 13, 27, 31: Standard with minimum climb of 500'/NM to 520.

NOTE: Jet aircraft only.
NOTE: Accelerate to 250K until leaving 10000, if unable, advise ATC.



(COMPLETED ON FOLLOWING PAGE)

NOTE: Chart not to scale.

SE-3, 07 AUG 2025 to 04 SEP 2025

MAYNR THREE DEPARTURE (RNAV)
(MAYNR3.MAYNR) 31OCT24

FORT LAUDERDALE, FLORIDA
FORT LAUDERDALE EXEC (FXE)