

WAAS CH 87036 W34A	APP CRS 335°	Rwy Idg TDZE Apt Elev	4997 83 83
--	------------------------	-----------------------------	---------------------------------------

RNAV (GPS) RWY 34

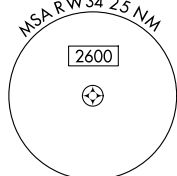
DE QUINCY INDUSTRIAL AIRPARK (5R8)

▼ For uncompensated Baro-VNAV systems, LNAV/VNAV NA below -15°C (5°F) or above 54°C (130°F). DME/DMZ RNP-0.3 NA. Helicopter visibility reduction below ¼ SM NA. ▲ NA When local altimeter setting not received, use Sulphur altimeter setting and increase all DA 55 feet and MDA 60 feet, increase LPV and LNAV/VNAV visibility all Cats ¼, LNAV and Circling Cat C visibility ½ mile. Baro-VNAV and VDP NA with Sulphur altimeter setting. Night landing Rwy 16 NA.

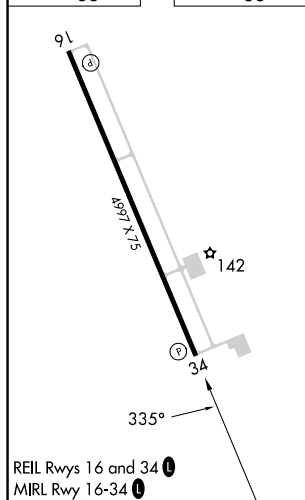
MISSED APPROACH: Climb to 1700 direct FEPRO and hold.

AWOS-3PT 121.2	LAKE CHARLES APP CON ★ 119.35 282.3	UNICOM 122.8 (CTAF) 0
--------------------------	---	--

MISSED APCH FIX



ELEV	83		TDZE	83
------	----	--	------	----



DE QUINCY, LOUISIANA
Amdt 2 05MAR15

[illegible]

DE QUINCY INDUSTRIAL AIRPARK (5R8)

RNAV (GPS) RWY 34

SC-4, 07 AUG 2025 to 04 SEP 2025

SC-4, 07 AUG 2025 to 04 SEP 2025

30°26'N-93°28'W