

WAAS CH 49026 W02A	APP CRS 017°	Rwy Ldg TDZE Apt Elev	6020 182 194
--	------------------------	-----------------------------	---

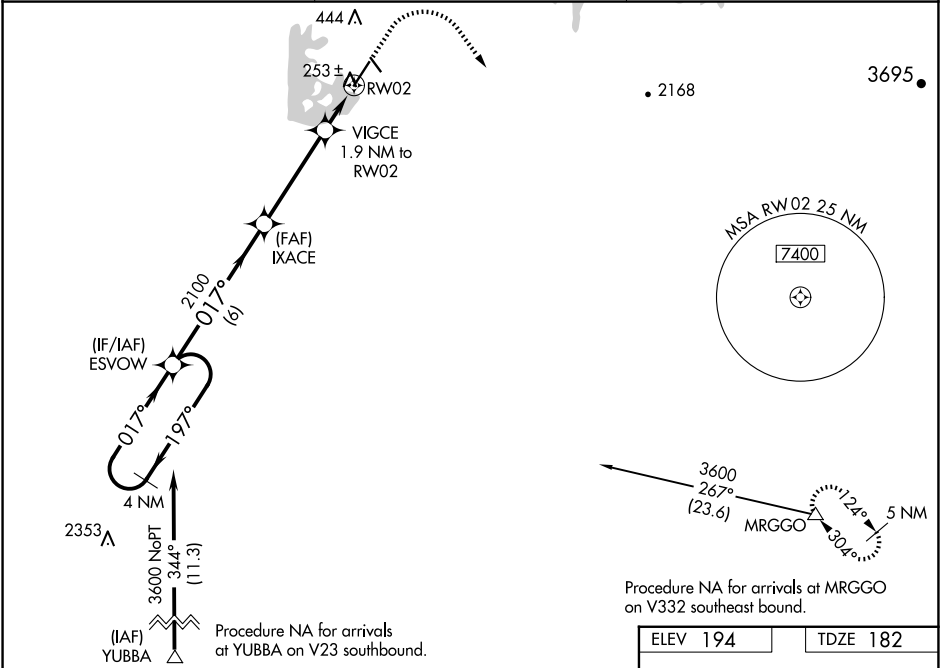
RNAV (GPS) RWY 2

Oroville Muni (OVE)

For uncompensated Baro-VNAV systems, LNAV/VNAV NA below -2°C (29°F) or above 54°C (130°F). Circling NA northeast of Rwy 13-31. DME/DME RNP-0.3 NA.

MISSED APPROACH: Climb to 650 then climbing right turn to 6000 direct MRGGO and hold, continue climb-in-hold to 6000.

ASOS 121.425	NORCAL APP CON 125.4 259.1	UNICOM 122.8 (CTAF)
------------------------	--------------------------------------	-------------------------------



VGSI and RNAV glidepath angles not coincident (VGSI Angle 3.00/TCH 44).

4 NM Holding Pattern

ESVOW

IXACE

VIGCE 1.9 NM to RW02

*0.9 NM to RW02

RW02

*820

6 NM

4 NM

1 NM

0.9

3600

197°

017°

017°

2100

017°

GP 3.00°

TCH 40

650

6000

MRGGO

*LNAV only

CATEGORY	A	B	C	D
LPV DA		432-7/8	250 (300-7/8)	
LNAV/VNAV DA		432-7/8	250 (300-7/8)	
LNAV MDA		520-1	338 (400-1)	
CIRCLING	580-1 386 (400-1)	660-1 466 (500-1)	660-1½ 466 (500-1½)	780-2 586 (600-2)

ELEV 194

TDZE 182

REIL Rwy 2 and 20

HIRL Rwy 2-20 and 13-31