

TEXOMA FIVE DEPARTURE

LONE STAR DEP CON
125.2 343.65
CTAF
122.7

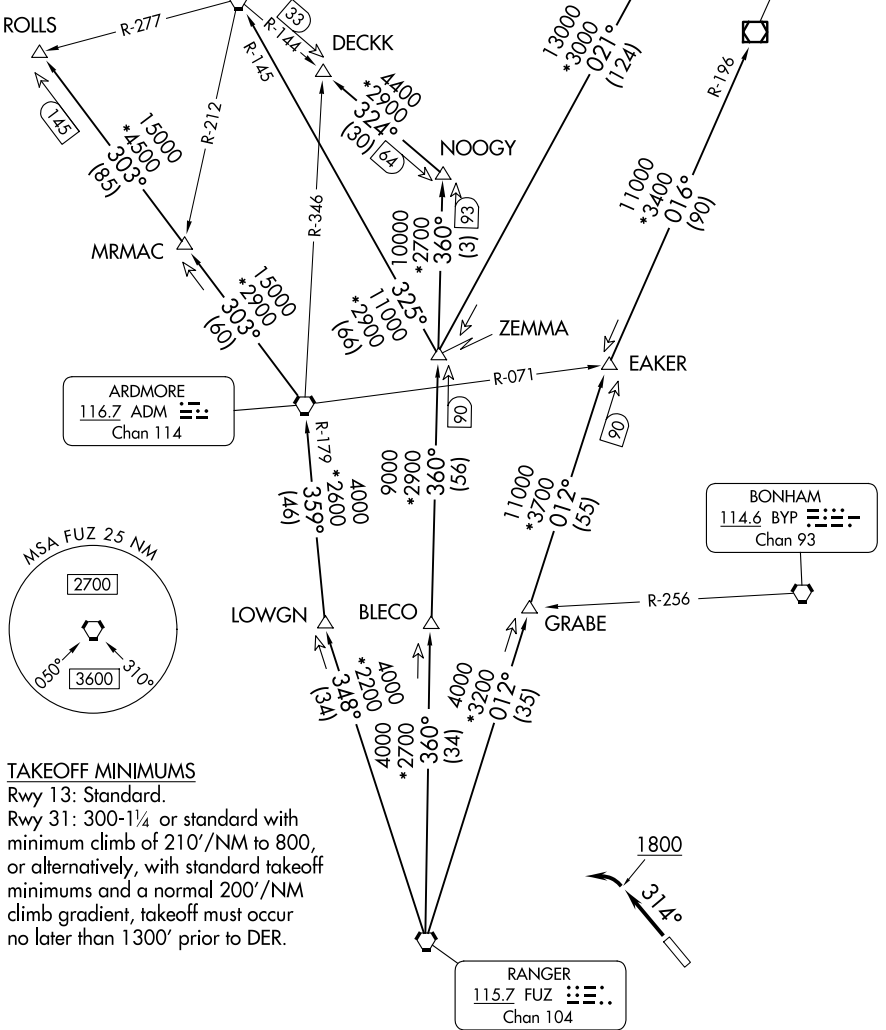
TOP ALTITUDE:
ASSIGNED BY ATC

TULSA
114.4 TUL :...:
Chan 91

RADAR and DME required.

WILL ROGERS
114.1 IRW :...:
Chan 88

OKMULGEE
114.9 OKM :...:
Chan 96



TAKEOFF MINIMUMS

Rwy 13: Standard.
Rwy 31: 300-1¼ or standard with
minimum climb of 210'/NM to 800,
or alternatively, with standard takeoff
minimums and a normal 200'/NM
climb gradient, takeoff must occur
no later than 1300' prior to DER.

NOTE: Chart not to scale.

(CONTINUED ON FOLLOWING PAGE)

TEXOMA FIVE DEPARTURE