

WAAS CH 42505 W31A	APP CRS 314°	Rwy Ldg 6500 TDZE 487 Apt Elev 501
--	------------------------	---

RNAV (GPS) RWY 31

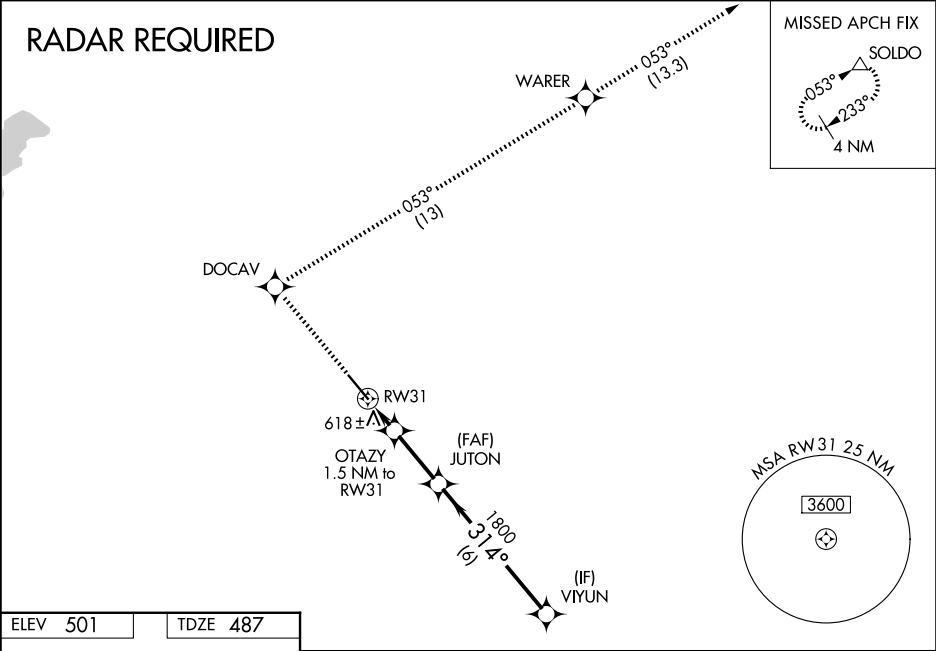
LANCASTER RGNL (LNC)

⚠

For uncompensated Baro-VNAV systems, LNAV/VNAV NA below -16°C (4°F) or above 47°C (116°F). DME/DME RNP-0.3 NA. Baro-VNAV NA when using Dallas Exec altimeter setting. When local altimeter setting not received, use Dallas Exec altimeter setting and increase LPV DA to 732 feet; increase LNAV/VNAV DA to 970 feet and visibility all Cats ¼ SM; increase all MDAs 60 feet and LNAV Cats C/D and Circling Cats C/D visibility ¼ SM.

MISSED APPROACH: Climb to 2000 direct DOCAV and right turn on track 053° to WARER then climb to 3000 on track 053° to SOLD0 and hold.

AWOS-3PT 118.975	LONE STAR APP CON 125.2 343.65	UNICOM 122.7 (CTAF) 0
----------------------------	--	---------------------------------



ELEV 501	TDZE 487	2000	DOCAV	WARER	3000	SOLD0	VIYUN
		↑	✧	✧	↑	△	
		tr 053°		tr 053°			
		* LNAV only					
		OTAZY 1.5 NM to RW31		JUTON 1800		2700	
		RW31		1800		GP 3.00° TCH 50	
		1.5 NM		2.5 NM		6 NM	
		CATEGORY		A		B	
		LPV DA		687-¾		200 (200-¾)	
		LNAV/VNAV DA		925-1½		438 (500-1½)	
		LNAV MDA		880-1		393 (400-1)	
		CIRCLING		980-1		1300-2½	
				479 (500-1)		799 (800-2½)	